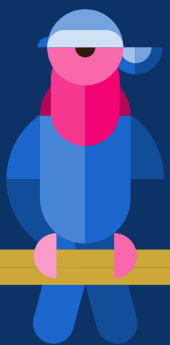
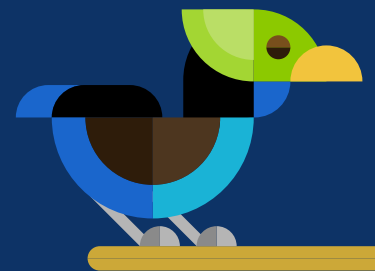
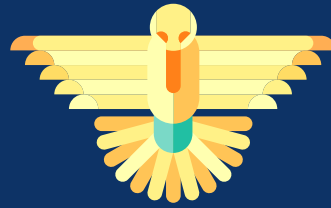




2020



## ACCESSORI PER ORNITOLOGIA E ANIMALI

*Accessories for ornithology and animals*  
*Accesorios por ornitología y animales*  
*Accessoires pour l'ornithologie et animaux*

# 2GR dal 1980



## STORIA DELL'AZIENDA

Partner affidabile con oltre 35 anni di esperienza.

La 2GR nasce nel 1980 come azienda produttrice di stampi per materie plastiche, per conto terzi.

Nel 1985 parallelamente all'attività di progettazione e costruzioni stampi, nasce la linea di prodotti per l'ornitologia che la 2GR inizia a produrre e commercializzare in proprio.

Fin da subito gli articoli 2GR spiccarono per qualità e facilità di montaggio e utilizzo, ma la scelta che si rivelò vincente, fu la ricerca di materiali assolutamente NON tossici.

Le esigenze di mercato e la creatività dello staff tecnico consente di ampliare ed arricchire la gamma dei prodotti; il continuo confronto con gli allevatori ci consente un'attenzione progettuale e produttiva costante.

Oggi la 2GR è presente in tanti mercati del mondo con oltre 400 prodotti per l'ornitologia, cane, gatto, tartarughe e criceti per il massimo confort dei nostri piccoli amici.

## THE HISTORY OF THE FACTORY

*Reliable partner for over 35 years.*

*The 2GR was born on the 1980 as a factory producing moulds for plastic materials on behalf of a third party.*

*In the 1985, together with the moulds' planning and producing activity, the 2GR creates its own ornitology range of products. The 2GR pays attention in choosing non toxic materials, high quality finishing, easy installation and use.*

*The market needs and the staff's creativity allow 2GR to enrich its range of products; the constant dialogue with breeders gives 2GR the possibility to pay attention to project making and constant production.*

*Nowadays, 2GR is present in many markets around the world with over 400 products for ornitology, cats, dogs, turtle and hamsters and the maximum confort for our little friends.*

## HISTORIA DE LA EMPRESA

*Un socio fiable mas 35 años.*

*2GR nace en el año 1980 como empresa especializada en la fabricación a terceros de models para inyección de materia plastica.*

*En 1985, palalelamente a la actividad de proyectar y construir models, nace una linea de productos para la ornitologia. La empresa 2GR comienza a producir y comercializar productos desde su propia estructura, utilizando materiales no tóxicos, acabados de calidad, praticos y faciles de montar y utilizar.*

*Con la exigencia del mercado y la creatividad del equipo técnico logramos ampliar y enriquecer la gama de productos, así como la continua relación con los criadores logra que exista una atención y tension proyectiva y productiva constante.*

*Al día de hoy, la empresa 2GR esta presente en muchos y diferentes mercados del mundo con mas de 400 productos especializados para ornitologia, perros, gatos, tortugues y roedores con el fin de ofrecer el maximo confort a nuestros pequeños amigos.*

## HISTOIRE DE LA SOCIÉTÉ

*Partenaire fiable avec plus de 35 années d'expérience.*

*2GR a été fondée en 1980 en tant que producteur de moules pour matériaux plastiques pour des tiers.*

*En 1985, en parallèle à la conception et la fabrication de moules, vient la ligne de produits pour l'ornithologie que 2GR commence à produire et à commercialiser en propre. La gamme de produits comprend une large gamme d'accessoires pour les oiseaux, comme des abreuvoirs, des mangeoires, des accessoires de transport, des baignoires et des nids; ainsi que des produits pour les petits animaux de compagnie comme les chiens et les chats, les tortues et les rongeurs, tels que des bols, des accessoires de transport, de la litière, des vivariums pour tortues et des cages pour hamsters. Depuis le début, les articles 2GR ont été appréciés pour leur qualité et leur facilité d'installation et d'utilisation, mais le choix qui a fait ses preuves a été la recherche de matériaux absolument non toxiques, une grande attention aux réglementations en vigueur concernant le transport des animaux, ce qui a amené 2GR à être le premier fabricant de produits de transport en plastique pour les oiseaux. Les exigences du marché et la créativité de l'équipe technique permettent d'élargir et d'enrichir la gamme de produits et le contact permanent avec les éleveurs nous permet d'assurer une attention constante dans la conception et la production. Aujourd'hui 2GR est présent sur de nombreux marchés dans le monde avec plus de 400 produits pour l'ornithologie, les chiens, les chats, les tortues et les hamsters pour assurer le confort maximum de nos petits amis.*

# INDICE

## INDEX - ÍNDICE - INDEX



### UCCELLI

BIRDS  
PÁJAROS  
OISEAUX

<b>Trasportini</b> Transport Trasportin Cage de transport .....	4
<b>Beverini</b> Drinkers Bevederos Fontaines .....	21
<b>Mangiatoie</b> Feeders Comederos Mangeoires .....	30
<b>Bagni</b> Baths Bañeras Bains .....	44
<b>Nidi</b> Nests Nidos Nids .....	46
<b>Gabbie</b> Cages Jaulas Cages .....	56
<b>Fondi</b> Bottoms Fondos Fonds .....	83
<b>Accessori</b> Accessories Accesorios Accessoires .....	84

### RODITORI & TARTARUGHE

RODENTS & TURTLES  
ROEDORES & TORTUGAS  
RONGEURS & TORTUES



<b>Maisonette</b> Maisonette Mansion Cage pour rongeurs .....	87
<b>Sifoni</b> Siphons Bebederos Abreuvoir pour rongeurs .....	89
<b>Accessori</b> Accessories Accesorios Accessoires .....	90
<b>Tartarughiere</b> Turtles tanks Tortugueras Cage pour tortues .....	92
<b>Trasportini</b> Transport Trasportin Cages de transport .....	96
<b>Lettiere</b> Litters Lettieras Litières .....	97
<b>Ciotole</b> Bowls Comederos Bols .....	98



### CANI & GATTI

DOGS & CATS  
PERROS & GATOS  
CHIENS & CHATS





TUTTI I NOSTRI ARTICOLI DA TRASPORTO  
RISPETTANO LE NUOVE NORMATIVE

# TINO



## TINO ECONOMY

Art. 235



– cm. 38 x 39 x 18h

**Tino Economy senza interno estraibile**  
*Tino Economy without internal grey case*  
*Tino Economy sin caja interna gris*  
*Tino Economy sans caisse interne grise*



**+ LEGGERO  
+ ECONOMICO  
SENZA INTERNO ESTRAIBILE**

Art. 207



— cm. 38 x 39 x 3h  
**Coperchio con maniglia**  
*Lid with handle*  
*Tapa con asa*  
*Couvercle avec poignée*



Art. 200



— cm. 38 x 39 x 18h  
**Trasportino con griglia fissa e mangiatoia esterna**  
*Transport cage with fixed grill and external feeder*  
*Transportin con reja fija y comederos externos*  
*Cage de transport avec grille fixe et mangeoires extérieures*



**INTERNO ESTRAIBILE**



Art. 250



**Interno completo dell'Art. 200**  
*Interior complete of Art. 200*  
*Interior completo para Art. 200*  
*Intérieur complet pour Art. 200*





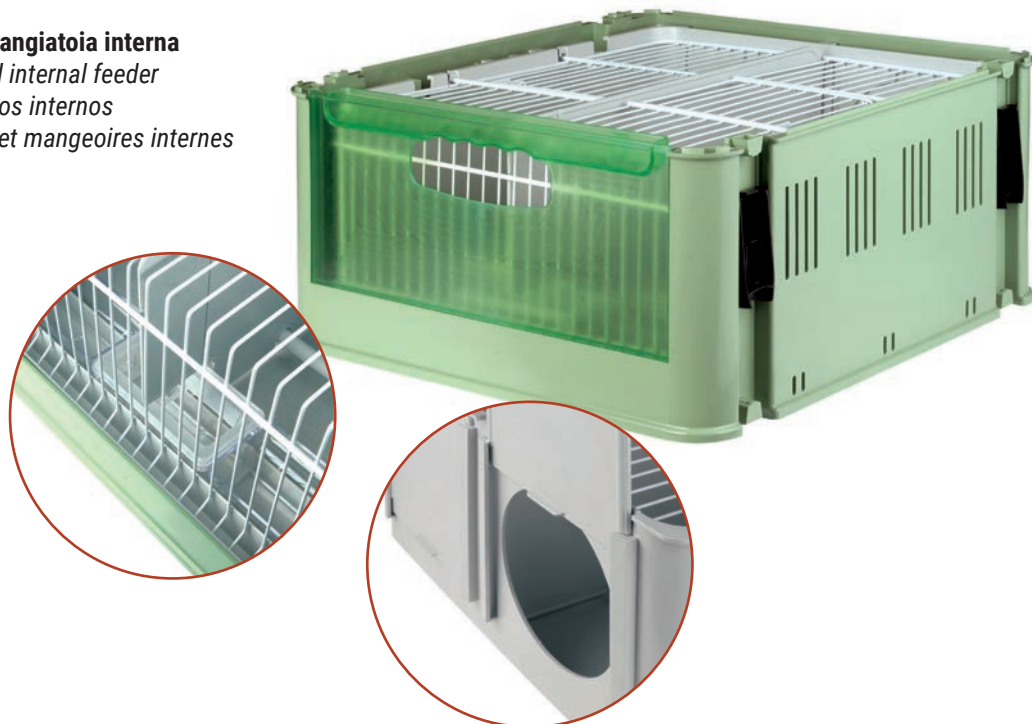
## Art. 201



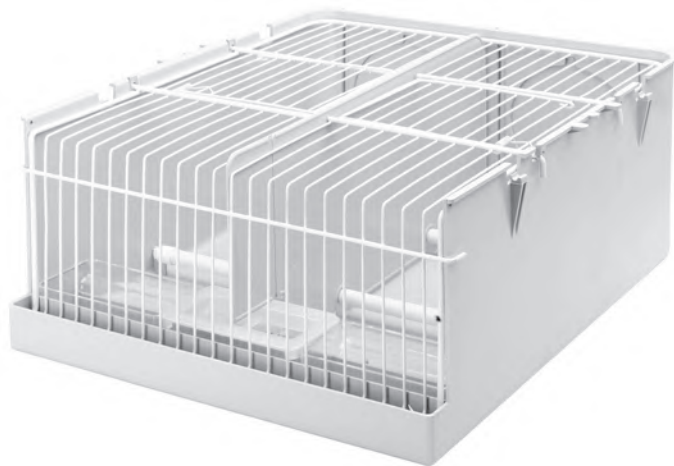
— cm. 38 x 39 x 18h

**Trasportino con griglia fissa e mangiatoia interna***Transport cage with fixed grill and internal feeder**Trasportin con reja fija y comederos internos**Cage de transport avec grille fixe et mangeoires internes*

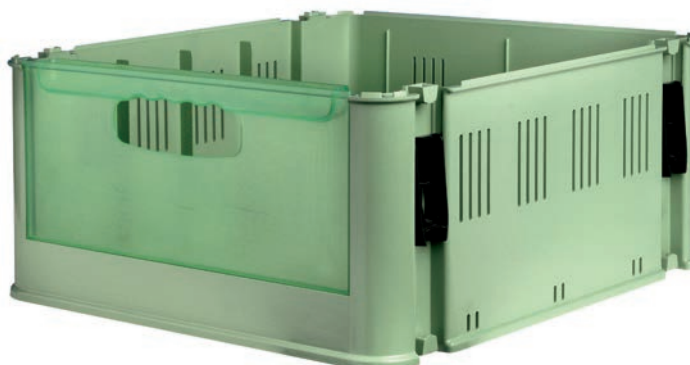
## TINO



## Art. 251

**Interno completo dell'Art. 201***Interior complete of Art. 201**Interior completo para Art. 201**Intérieur complet pour Art. 201*

## Art. 218

**Scatola esterna del Tino***Tino 's external case**Caja externa de Tino**Caisse externe du Tino*

Art. 202



8 033844 762454

— cm. 38 x 39 x 18h -> 35h  
**Trasportino con griglia Telescopica**  
*Transport cage with Telescopic grill*  
*Trasportin con reja Telescópica*  
*Cage de transport avec grille telescopique*



IDONEO PER MOSTRE SCAMBIO

Art. 252



8 033844 763017

**Interno completo dell'Art. 202**  
*Interior complete of Art. 202*  
*Interior completo para Art. 202*  
*Interieur complet pour Art. 202*







## MAXI TINO



Art. 204

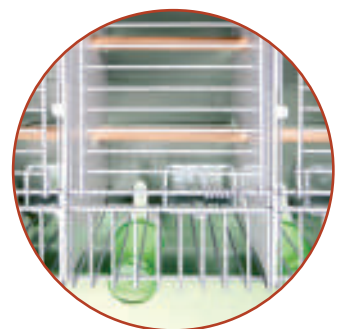


– cm. 66,8 x 34,3 x 21h  
**Trasportino per ondulati a 5 posti**  
*Transport cage for budgerigar 5 spaces*  
*Trasportin para periquito a 5 lugares*  
*Cage de transport pour perokeet avec 5 lieux*



MANGIATOIE INTERNE

PORTA GRANDE



Art. 217



— cm. 66,8 x 34,3 x 2,5h  
**Coperchio per Maxi-Tino**  
*Maxi-Tino's cover*  
*Tapa para Maxi-Tino*  
*Couvercle pour Maxi-Tino*



Art. 205

## MAXI TINO

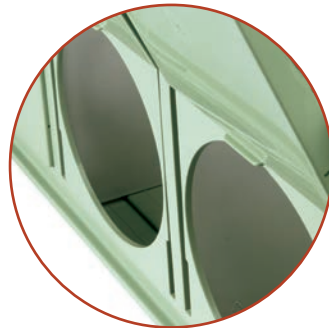


— cm. 66,8 x 34,3 x 21h  
**Trasportino per soggetti di media taglia aperto sul retro**  
*Transport cage for medium sizes bird open in the back side*  
*Transportin para parajos tamaños mediano abierto posteriormente*  
*Cage de Transport pour oiseaux de moyenne taille ouverte a l'arriere*



### MANGIATOIE ESTERNE

### PORTA PICCOLA



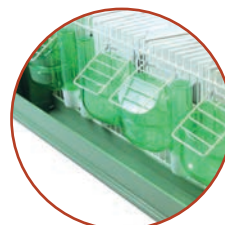
Art. 233



— cm. 66,8 x 34,3 x 21h  
**Trasportino per soggetti di media taglia chiuso sul retro**  
*Transport cage for medium sizes bird closed in the back side*  
*Transportin para parajos tamaños mediano cerrado posteriormente*  
*Cage de Transport pour oiseaux de moyenne taille fermé a l'arriere*



### RETRO CHIUSO





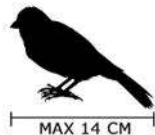
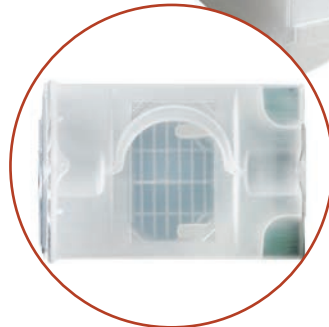
## SECONDINO

Trasporto singolo  
Single transport  
Transporte singolo  
Transport individuel

Art. 220



– cm. 16 x 11,7 x 14,6h  
Trasporto singolo per taglie piccole  
Single transport cage for small size  
Transporte unico para tallas pequeñas  
Cage de transport pour petites tailles



TUTTI I NOSTRI ARTICOLI DA TRASPORTO  
RISPETTANO LE NUOVE NORMATIVE



Art. 203



– cm. 38 x 39 x 18h  
Tino + n. 6 Secondino



Art. 234



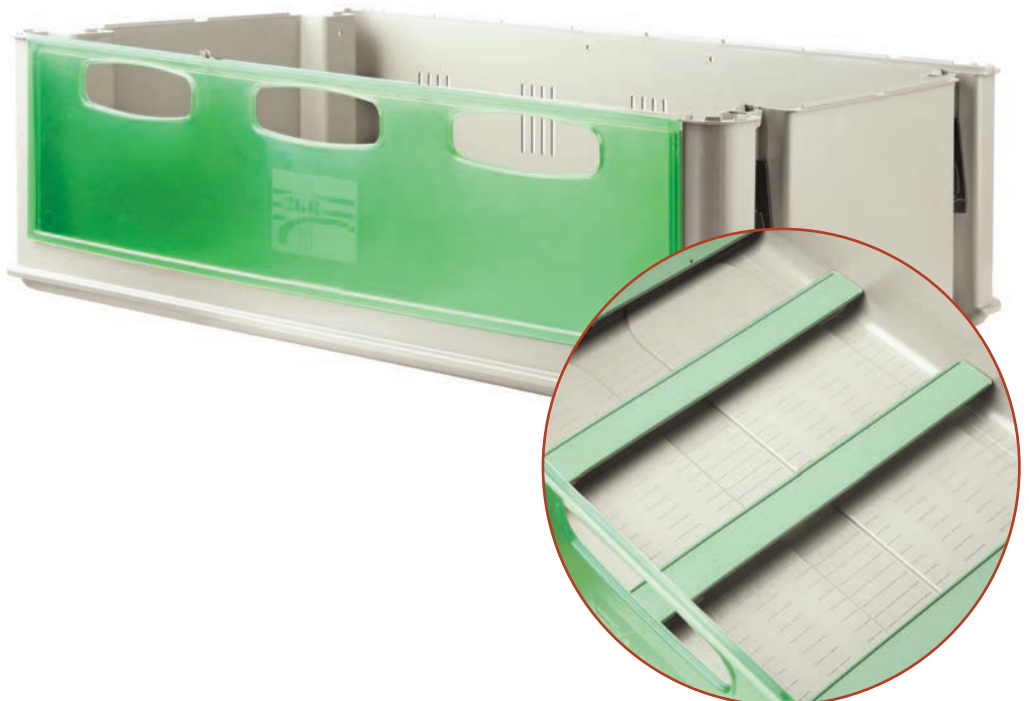
– cm. 66,8 x 34,3 x 21h  
Maxi Tino + n. 10 Secondini



Art. 239



cm. 66,8 x 34,3 x 21h  
Maxi Tino vuoto con supporti  
*Maxi Tino empty with support*  
*Maxi Tino vacío con soporte*  
*Maxi Tino vide avec soutient*





## VALIGIA

## Art. 225



8 033844 762713

– cm. 66,8 x 21 x 36h  
**Valigia completa di 10 Secondini**  
*Complete case with 10 Secondini*  
*Maleta con 10 Secondini*  
*Valise complet avec 10 Secondini*



## Art. 226



8 033844 762744

– cm. 66,8 x 21 x 36h  
**Valigia vuota**  
*Empty case*  
*Maleta vacia*  
*Valise vide*



## SECONDINO MEDIO

**Trasporto singolo medio**  
Secondino Medium-size  
Secondino Mediano  
Secondino Moyen

**Art. 244**



– cm. 20 x 11 x 14 h.

**Trasportino singolo per taglie medie**  
Single transport cage for medium size  
Transporte singolo para talla media  
Cage de transport pour tailles moyenne



**Art. 256**



– cm. 37 x 22 x 43h  
**Valigia 6 posti**  
Case with 6 places  
Maleta con 6 lugares  
Valise avec 6 lieux



**Art. 261**



**Valigia vuota con 6 posti**  
Empty case with 6 places  
Maleta vacia con 6 lugares  
Valise vide avec 6 lieux



**Art. 265**



**Kit luci per valigia 6 posti**  
Light kit for 6 places case  
Sistema de iluminacion para maleta con 6 lugares  
Lumiere pour valise avec 6 lieux



**Art. 276**



**Copertura x valigia 6 posti**  
Cover for 6 places case  
Cobertura para maleta con 6 lugares  
Couverture pour valise avec 6 lieux





## Art. 257



— cm. 48 x 22 x 43h  
**Valigia 8 posti**  
 Case with 8 places  
 Maleta con 8 lugares  
 Valise avec 8 lieux



## Art. 262



**Valigia vuota 8 posti**  
 Empty case with 8 places  
 Maleta vacia con 8 lugares  
 Valise vide avec 8 lieux



## Art. 266



**Kit luci per valigia 8 posti**  
 Light kit for 8 places case  
 Sistema de iluminacion para maleta con 8 lugares  
 Lumiere pour valise 8 lieux



## Art. 277



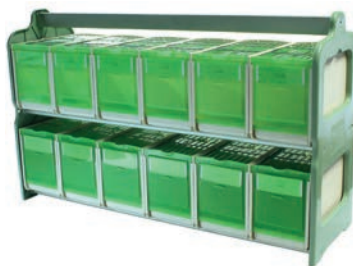
**Copertura x valigia 8 posti**  
 Cover for 8 places case  
 Cobertura para maleta con 8 lugares  
 Couverture pour valise avec 8 lieux



## Art. 258



— cm. 71 x 22 x 43h  
**Valigia 12 posti**  
 Case with 12 places  
 Maleta con 12 lugares  
 Valise avec 12 lieux



## Art. 263



**Valigia vuota 12 posti**  
 Empty case with 12 places  
 Maleta vacia con 12 lugares  
 Valise vide avec 12 lieux



## Art. 267



**Kit luci per valigia 12 posti**  
 Light kit for 12 places case  
 Sistema de iluminacion para maleta con 12 lugares  
 Lumiere pour valise 12 lieux



## Art. 278



**Copertura x valigia 12 posti**  
 Cover for 12 places case  
 Cobertura para maleta con 12 lugares  
 Couverture pour valise avec 12 lieux



**Art. 259**



— cm. 71 x 22 x 62h  
**Valigia 18 posti**  
Case with 18 places  
Maleta con 18 lugares  
Valise avec 18 lieux



**Art. 264**



**Valigia vuota 18 posti**  
Empty case with 18 places  
Maleta vacia con 18 lugares  
Valise vide avec 18 lieux



**Art. 268**



**Kit luci per valigia 18 posti**  
Light kit for 18 places case  
Sistema de iluminacion para maleta con 18 lugares  
Lumiere pour valise 18 lieux



**Art. 279**



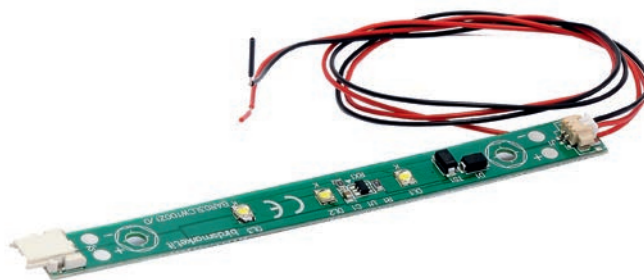
**Copertura x valigia 18 posti**  
Cover for 18 places case  
Cobertura para maleta con 18 lugares  
Couverture pour valise avec 18 lieux



**Art. 270**



**Kit luci universale**  
Universal light kit  
Sistema de iluminacion universal  
Lumiere universel



**Art. 271**



**Accendisigari con cavo di mt.3**  
Lighter with 3 m. cable  
Encendedor con cable de 3 m.  
Briquet avec cable 3 mt.







## Art. 273



— cm. 75 x 45 x 110h  
**Carrello con 60 secondini medi**  
*Trolley with 60 medium-size Secondini*  
*Carrito con 60 Secondini medianos*  
*Chariot avec 60 Secondini*



## Art. 273/A



— cm. 75 x 45 x 43h  
**Modulo superiore con 24 Secondini**  
*Upper module with 24 Secondini*  
*Modulo superior con 24 Secondini*  
*Module supérieure avec 24 Secondini*



## Art. 273/B



— cm. 75 x 45 x 70h  
**Modulo inferiore con 36 Secondini**  
*Lower module with 36 Secondini*  
*Modulo inferior con 36 Secondini*  
*Module basse avec 36 Secondini*



## Art. 273/C

— cm. 75 x 45 x 6h  
**Comp. trasformazione ruote removibili**  
*Additional part for removable wheels*  
*Componente para ruedas removible*  
*Part supplémentaire pour roues amovibles*



## Art. 260



cm. 120 x 44 x 164h  
**Carrello con 160 secondini medi**  
*Trolley with 160 medium-size Secondini*  
*Carrito con 160 Secondini medianos*  
*Chariot avec 160 Secondini*



**FORMATO DA DUE MODULI**  
**MADE UP OF TWO MODULES**  
**HECHO CON DOS MODULOS**  
**FAIT AVEC DEUX MODULES**

## Art. 269



**Kit luci x art.260**  
*Light kit for art. 260*  
*Sistema de iluminacion para art. 260*  
*Lumiere pour art. 260*



## SECONDINO MAXI

Art. 242



8 033844 762904



10 PCS.

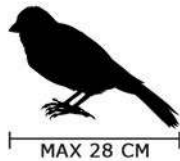
– cm. 31 x 11,5 x 16h

**Trasportino singolo per taglie grandi**

*Single transport cage for medium size*

*Transporte singolo para talla media*

*Cage de transport pour tailles moyenne*



MAX 28 CM

RISPETTA LE NUOVE NORMATIVE

Art. 245



8 033844 762935

– cm. 66,8 x 34,3 x 21h

**Maxi Tino + n. 5 Secondini Maxi**





## Art. 214



8 033844 762553

– cm. 10 x 5 x 4h  
**Mangiatoia rettangolare**  
*Rectangular feeder*  
*Comedero rectangular*  
*Mangeoire rectangulaire*



## Art. 206



8 033844 762478

cc. 100  
**Beverino rettangolare**  
*Rectangular drinker*  
*Bebedero rectangular*  
*Fontaine rectangulaire*



## Art. 248



8 033844 762973

cc. 50  
**Beverino/Mangiatoia per art. 242 e 244**  
*Drinker/Feeder for art. 242 and 244*  
*Bebedero/Comedero para art. 242 y 244*  
*Fontaine/Mangeoire pour art. 242 et 244*



## Art. 247



8 033844 762966

**Gancio per coperchio valigia art. 225**  
*Hook for case's cover art. 225*  
*Gancho para tapa maleta art. 225*  
*Crochet pour couvercle de la valise art. 225*



## Art. 210



8 033844 762515

**Gancio**  
*Hook*  
*Gancho*  
*Crochet*



## Art. 216



8 033844 762577

– cm. 29  
**Posatoio per Art. 200-201-202**  
*Perch for Art. 200-201-202*  
*Posaderos para Art. 200-201-202*  
*Perchoir pour Art. 200-201-202*



## Art. 249



8 033844 762980

– cm. 35,5  
**Posatoio per Art. 235**  
*Perch for Art. 235*  
*Posaderos para Art. 235*  
*Perchoir pour Art. 235*



Art. 215



**Parete estraibile per Tino**  
Tino's removable wall  
Pared extraible para Tino  
Amovible cloison pour Tino



Art. 227



**Parete estraibile per Maxi-Tino**  
Maxi-Tino's removable wall  
Pared extraible para Maxi-Tino  
Amovible cloison pour Maxi-Tino



Art. 236



**Divisoria per Tino Economy**  
Tino Economy's dividing wall  
Divisoria para Tino Economy  
Cloison pour Tino Economy

COMPATIBILE CON ART. 235



Art. 209



**Divisoria per Tino**  
Tino's Dividing wall  
Divisorio para Tino  
Cloison pour Tino

COMPATIBILE CON ART. 200-201



Art. 228/C



**Divisoria per Maxi-Tino**  
Maxi-Tino's dividing wall  
Divisoria para Maxi-Tino  
Cloison pour Maxi-Tino

PER MAXI TINO  
SENZA POSATOI



Art. 228/A



**Divisoria per Maxi-Tino**  
Maxi-Tino's dividing wall  
Divisoria para Maxi-Tino  
Cloison pour Maxi-Tino

COMPATIBILE CON  
ART. 204-205-233



Art. 237



**Supporti per Secondino**  
Supports for Secondino  
Soportes para Secondino  
Soutien pour Secondino



Art. 208



**Ruote**  
Wheels  
Ruedas  
Roues

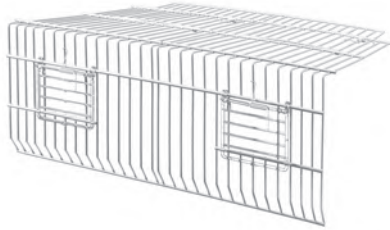




Art. 238



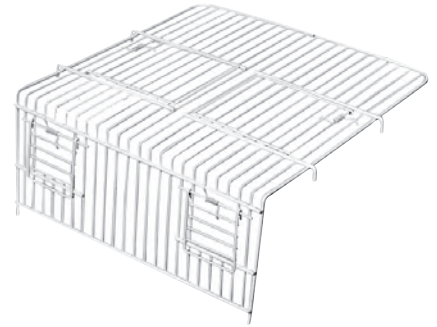
**Griglia per Art. 235**  
*Grill for Art. 235*  
*Reja para Art. 235*  
*Grille pour Art. 235*



Art. 211



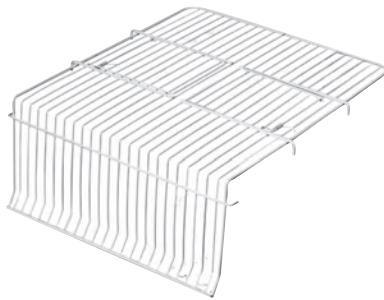
**Griglia per Art. 200**  
*Grill for Art. 200*  
*Reja para Art. 200*  
*Grille pour Art. 200*



Art. 212



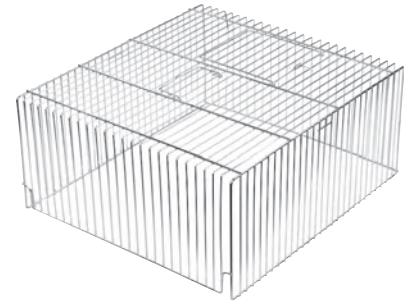
**Griglia per Art. 201**  
*Grill for Art. 201*  
*Reja para Art. 201*  
*Grille pour Art. 201*



Art. 213



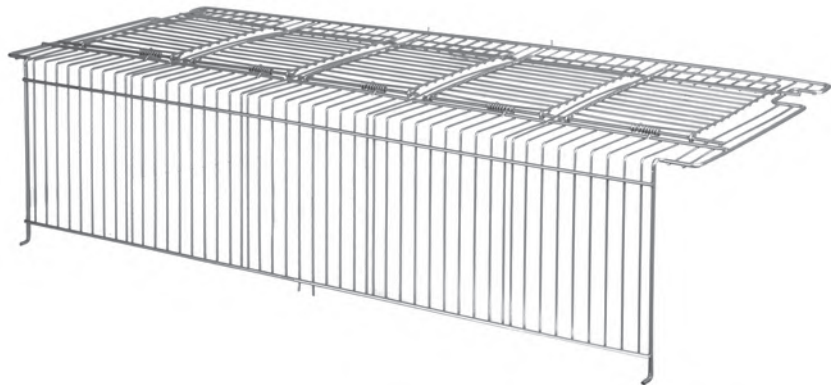
**Griglia per Art. 202**  
*Grill for Art. 202*  
*Reja para Art. 202*  
*Grille pour Art. 202*



Art. 229



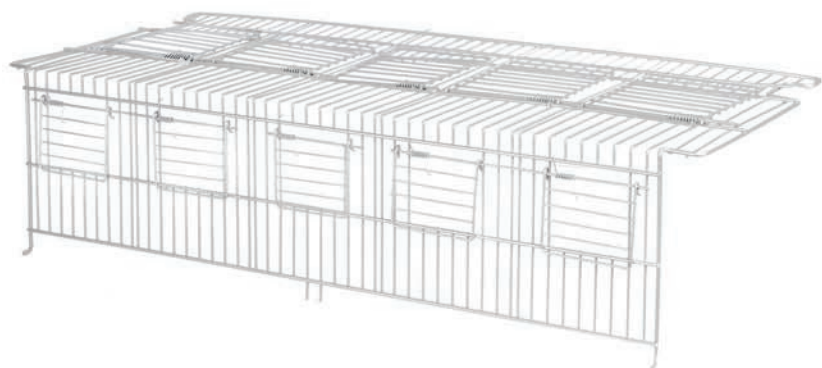
**Griglia per art.204**  
*Grill for art. 204*  
*Reja para art. 204*  
*Grille pour art. 204*



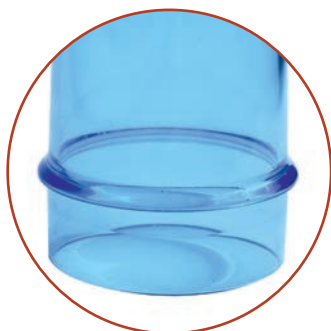
Art. 230



**Griglia per art.205**  
*Grill for art. 205*  
*Reja para art. 205*  
*Grille pour art. 205*



## SERIE CON BORDO



### Art. 146



8 033844 761655



60 PCS.

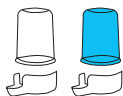
cc. 40

**Beverino per medicinali**

Medicine dispenser

Bebedero para medicamentos

Fontaine pour médicaments



### Art. 274



8 033844 763239



80 PCS.

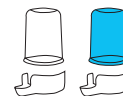
cc. 72

**Sifone Aosta corto**

Aosta short siphon

Bebedero corto Aosta

Fontaine court Aosta



### Art. 284



8 033844 763284



80 PCS.

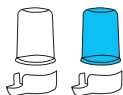
cc. 105

**Sifone Aosta lungo**

Aosta long siphon

Bebedero Aosta largo

Fontaine long Aosta



### Art. 184



8 033844 762119



24 PCS.

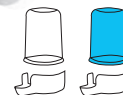
cc. 200

**Sifone Leo**

Leo siphon

Bebedero Leo

Fontaine Leo



### Art. 386



8 033844 764533



24 PCS.

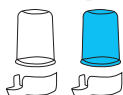
cc. 260

**Sifone Venezia**

Venezia Siphon

Bebedero Venezia

Fontaine Venezia



### Art. 387



8 033844 764540



20 PCS.

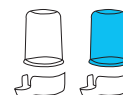
cc. 400

**Sifone Pisa**

Pisa Siphon

Bebedero Pisa

Fontaine Pisa



# SERIE CON BORDO

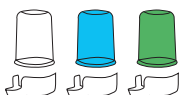
## Art. 240



8 033844 762898



**cc. 20**  
**Beverino Dino**  
*Dino drinker*  
*Bebedero Dino*  
*Fontaine Dino*



## Art. 221



8 033844 762607



**cc. 30**  
**Beverino Secondino**  
*Secondino drinker*  
*Bebedero Secondino*  
*Fontaine Secondino*



MANGIARE



BERE



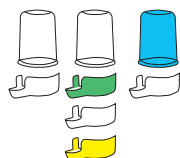
## Art. 158



8 033844 761778



**cc. 72**  
**Beverino corto lusso**  
*Short luxury drinker*  
*Bebedero corto lujo*  
*Fontaine court luxe*



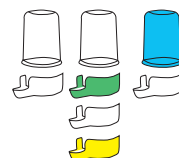
## Art. 128



8 033844 761488



**cc. 105**  
**Beverino lungo lusso**  
*Long luxury siphon*  
*Bebedero largo lujo*  
*Fontaine long luxe*

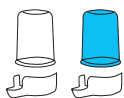


## SERIE CON BORDO

**Art. 131**



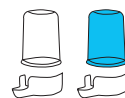
**cc. 140**  
**Sifone Marta**  
*Marta siphon*  
*Bebedero Marta*  
*Fontaine Marta*



**Art. 275**



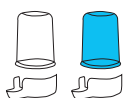
**cc. 200**  
**Sifone Ferrara**  
*Ferrara siphon*  
*Bebedero Ferrara*  
*Fontaine Ferrara*



**Art. 380**



**cc. 260**  
**Sifone Amalfi**  
*Amalfi siphon*  
*Bebedero Amalfi*  
*Fontaine Amalfi*



**Art. 222**



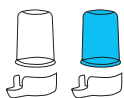
**cc. 105**  
**Sifone universale**  
*Siphon universal*  
*Bebedero universal*  
*Fontaine Universel*



**Art. 285**



**cc. 400**  
**Sifone Livorno**  
*Livorno siphon*  
*Bebedero Livorno*  
*Fontaine Livorno*





## SERIE SENZA BORDO



### Art. 018/F



**cc. 70**  
**Beverino corto fumè**  
*Short brown siphon*  
*Bebedero corto fumè*  
*Fontaine court fumé*



### Art. 018



**cc. 70**  
**Beverino corto**  
*Short siphon*  
*Bebedero corto*  
*Fontaine court*



### Art. 038



**cc. 90**  
**Sifone lungo**  
*Long siphon*  
*Bebedero largo*  
*Fontaine long*



### Art. 134



**cc. 200**  
**Sifone Firenze lusso**  
*Firenze luxury siphon*  
*Bebedero Florencia lujo*  
*Fontaine Florence luxe*



### Art. 034



**cc. 200**  
**Sifone Firenze**  
*Firenze siphon*  
*Bebedero Florencia*  
*Fontaine Florence*



### Art. 034/F



**cc. 200**  
**Sifone Firenze fumè**  
*Firenze brown siphon*  
*Bebedero Florencia fumè*  
*Fontaine Florence fumé*

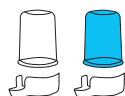


## SERIE SENZA BORDO

### Art. 068



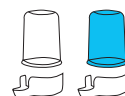
cc. 260  
**Sifone Reggio**  
*Reggio siphon*  
*Bebedero Reggio*  
*Fontaine Reggio*



### Art. 060/A



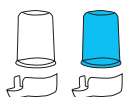
cc. 400  
**Sifone Lucca con anello**  
*Lucca siphon with ring*  
*Bebedero Lucca con anilla*  
*Fontaine Lucca avec anneau*



### Art. 087



cc. 80  
**Sifone banana**  
*Banana-shaped siphon*  
*Bebedero banana*  
*Fontaine banane*



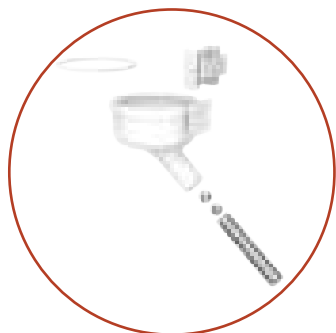
### Art. 395



**Anello per beverini cc 400**  
*Ring for drinkers cc 400*  
*Annilla para bebederos cc 400*  
*Anneau pour abreuvoir cc 400*



BEVERINO A GOCCIA - DROP DRINKER - BEBEDERO A GOTA - FONTAINE AVEC GOUTTE



**BEVERINO CON SFERE**  
SIPHON WITH BALLS  
BEBEDERO CON BOLAS  
FONTAINE AVEC SPHERE



**BEVERINO SENZA SFERE**  
SIPHON WITHOUT BALLS  
BEBEDERO SIN BOLAS  
FONTAINE SANS SPHERE

Art. 361



**Sifone Revolution cc 72**  
Revolution siphon cc 72  
Bebedero Revolution cc 72  
Fontaine Revolution cc 72



Art. 362



**Sifone Revolution cc 105**  
Revolution siphon cc 105  
Bebedero Revolution cc 105  
Fontaine Revolution cc 105



Art. 363



**Sifone Revolution cc 140**  
Revolution siphon cc 140  
Bebedero Revolution cc 140  
Fontaine Revolution cc 140



Art. 364



**Sifone Revolution cc 200**  
Revolution siphon cc 200  
Bebedero Revolution cc 200  
Fontaine Revolution cc 200



Art. 365



**Sifone Revolution cc 260**  
Revolution siphon cc 260  
Bebedero Revolution cc 260  
Fontaine Revolution cc 260

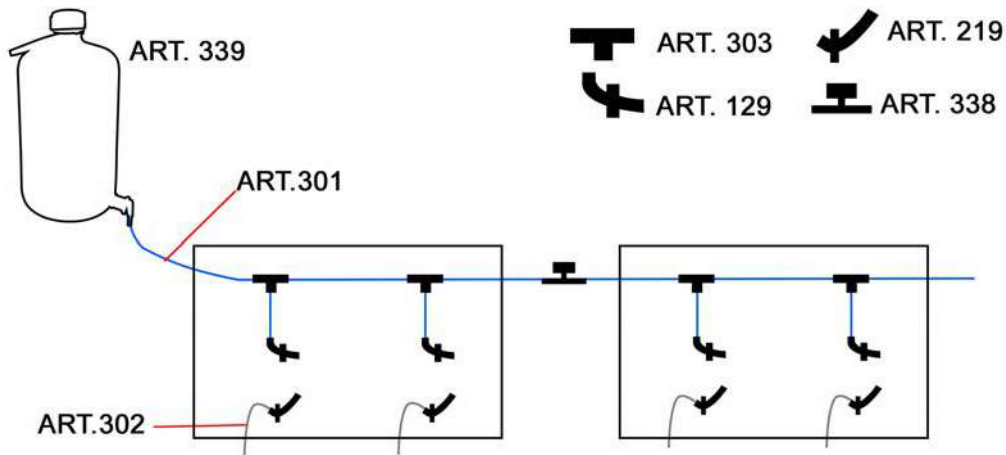


Art. 366



**Sifone Revolution cc 400**  
Revolution siphon cc 400  
Bebedero Revolution cc 400  
Fontaine Revolution cc 400





**Art. 129**



**Erogatore magic**  
Magic dispenser  
Dispensador magic  
Distributeur Magique



**Art. 219**



– cm. 6 x 2 x 2h  
**Salva-goccia per Art. 129**  
Drop-saver for Art. 129  
Salva-gota para Art. 129  
Salve-goutte pour Art. 129



**Art. 301**



**Tubo diam. int. 5 per art. 129**  
Tube diameter int. 5 for art. 129  
Tubo diámetro int. 5 para art. 129  
Tube diametre int. 5 pour art. 129



Ø INT. MM. 5

**Art. 302**



**Tubo diam. int. 8 per art. 219**  
Tube diameter int. 8 for art. 219  
Tubo diámetro int. 8 art. 219  
Tube diametre int. 8 pour art. 219



Ø INT. MM. 8

**Art. 303**



**Raccordo a "T" per tubo art. 301**  
"T" Connection for tube art. 301  
Conector "T" para tubo art. 301  
Raccord "T" pour tube art. 301



**Art. 338**



**Rubinetto per tubo art. 301**  
Tap for tube art. 301  
Grifo para tubo art. 301  
Robinet pour tube art. 301



**Art. 339**



**Serbatoio per impianto a goccia**  
Tank for drop system  
Tanque para sistema de gota  
Réservoir pour système goutte



**LT. 10**

## Art. 310



8 033844 763437



12 PCS.

cc. 500 - cm. 9 x 9 x 10h  
**Beverino Capri**  
 Capri dispenser  
 Bebedero Capri  
 Fontaine Capri



## Art. 170



8 033844 761976



12 PCS.

cc. 500 - cm. 9 x 9 x 10h  
**Beverino Aves**  
 Aves dispenser  
 Bebedero Aves  
 Fontaine Aves



## Art. 311



8 033844 763444



12 PCS.

cc. 1000 - cm. 9 x 9 x 18h  
**Beverino Giglio**  
 Giglio dispenser  
 Bebedero Giglio  
 Fontaine Giglio



## Art. 171



8 033844 761983



12 PCS.

cc. 1000 - cm. 9 x 9 x 18h  
**Beverino Aves**  
 Aves dispenser  
 Bebedero Aves  
 Fontaine Aves



## Art. 130



8 033844 761501



12 PCS.

cc. 130  
**Beverino magic**  
 Magic drinker  
 Bebedero magic  
 Fontaine magique



Art. 321



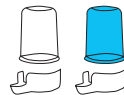
cc. 400  
**Sifone Bari**  
Bari siphon  
Bebedero Bari  
Fontaine Bari



Art. 066



cc. 400  
**Sifone Napoli**  
Napoli siphon  
Bebedero Napoles  
Fontaine Napoli

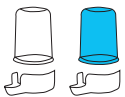


REGOLABILE

Art. 321/B



cc. 260  
**Sifone Ancona**  
Ancona Siphon  
Bebedero Ancona  
Fontaine Ancona



Art. 065



cc. 215  
**Sifone mang. pappagalli**  
Feeder and siphon for parrot  
Comedero bebedero papagayo  
Siphon mangeoire perroquet



Art. 253



– cm. 9 x 9 x 6,5h  
**Mangiatoia "Ara" piccola**  
"Ara" small Feeder  
Comodero "Ara" pequeño  
Mangeoire "Ara" petit



Art. 254



– cm. 12 x 12 x 6,5h  
**Mangiatoia "Ara" media**  
"Ara" medium Feeder  
Comodero "Ara" mediano  
Mangeoire "Ara" moyen



## Art. 058



20 PCS.



cc. 1500

**Abbeveratoio per polli**  
Water dispenser for chicken  
Abrevadero para pollitos  
Abreuvoir pour poulet



## Art. 186



80 PCS.



– cm. 8 x 5  
**Porta**  
Door  
Puerta  
Porte

**MOLLA NON INCLUSA**  
SPRING NOT INCLUDED

## Art. 185



80 PCS.



– cm. 7,5 x 5 x 8h  
**Mangiatoia Hasselt**  
Hasselt feeder  
Comodero Hasselt  
Mangeoire Hasselt

## Art. 335



80 PCS.



– cm. 7,3 x 8 x 7,5h  
**Mangiatoia Amsterdam**  
Amsterdam Feeder  
Comedero Amsterdam  
Mangeoire Amsterdam

## Art. 199



80 PCS.



– cm. 7,5 x 5 x 8h  
**Mangiatoia Piacenza**  
Piacenza Feeder  
Comodero Piacenza  
Mangeoire Piacenza

## Art. 017



72 PCS.



– cm. 7 x 4 x 7h  
**Mangiatoia Napoli**  
Napoli feeder  
Comedero Napoles  
Mangeoire Napoli

Art. 147



8 033844 761662



– cm. 8 x 4,5 x 7,5h  
**Mangiatoia "lusso"**  
*"Lusso" feeder*  
*Comedero "Lujo"*  
*Mangeoire Luxe*



Art. 160



8 033844 761792



– cm. 8 x 4,5 x 7,5h  
**Mangiatoia Milano**  
*Milano feeder*  
*Comedero Milano*  
*Mangeoire Milano*



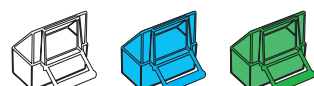
Art. 024



8 033844 760320



– cm. 7 x 4 x 8h  
**Mangiatoia esterna**  
*External feeder*  
*Comedero externo*  
*Mangeoire Exterieur*



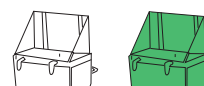
Art. 232



8 033844 762812



– cm. 7 x 4 x 8h  
**Mangiatoia interna con ganci**  
*Internal feeder with hooks*  
*Comedero interno con ganchos*  
*Mangeoire interieur avec crochet*



Art. 103



8 033844 761174



– cm. 6,5 x 4 x 7,5h  
**Mangiatoia Spagna 2000**  
*Spagna 2000 feeder*  
*Comedero España 2000*  
*Mangeoire Espagne 2000*



Art. 105



8 033844 761198



– cm. 6,5 x 4 x 7,5h  
**Mangiatoia Italia 2000**  
*Italia 2000 feeder*  
*Comedero Italia 2000*  
*Mangeoire Italia 2000*





**Art. 028**

– cm. 6 x 4 x 5,3h  
**Mangiatoia mezzaluna**  
*Half moon shaped feeder*  
*Comedero media luna*  
*Mangeoire demi-lune*

**Art. 035**

– cm. 6 x 4 x 5,3h  
**Mangiatoia mezzaluna ganci**  
*Half moon shaped feeder with hooks*  
*Comedero media luna con gancho*  
*Mangeoire demi-lune avec crochet*

**Art. 336**

– cm. 6,4 x 4,5  
**Coperchio per mangiatoia mezzaluna**  
*Cover for half moon shaped feeder*  
*Tapa para comedero media luna*  
*Couvercle pour mangeoire demi-lune*

**Art. 012**

– cm. 6 x 3,4 x 3,2h  
**Mangiatoia att. dir. piccola**  
*Small feeder with direct connection*  
*Comedero pequeño enganchedirecto*  
*Petit mangeoire connexion directe*

**Art. 013**

– cm. 6 x 4 x 4,4h  
**Mangiatoia attacco diretto grande**  
*Big feeder with direct connection*  
*Comedero grande engancho directo*  
*Mangeoire grand connexion directe*



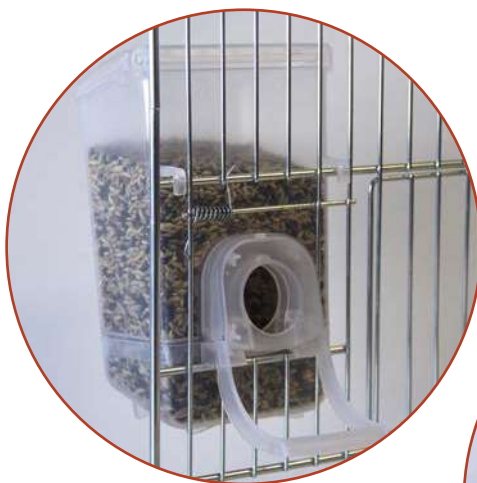
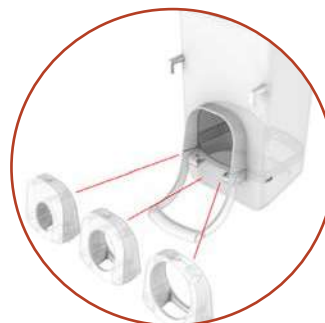
**LA NUOVA MANGIATOIA ANTISPRECO RIVOLUZIONARIA**  
*THE NEW REVOLUTIONARY NO-WASTE FEEDER*  
*EL NUEVO COMEDERO REVOLUCIONARIO ANTI-DERROCE*  
*LE NOUVEAU REVOLUTIONNAIRE MANGEOIRE ANTI-GASPILLAGE*

**Art. 323**



- cm. 8 x 10 x 13,5h  
**Mangiatoia Eclissi**  
*Eclipse feeder*  
*Comedero Eclipse*  
*Mangeoire Eclipse*

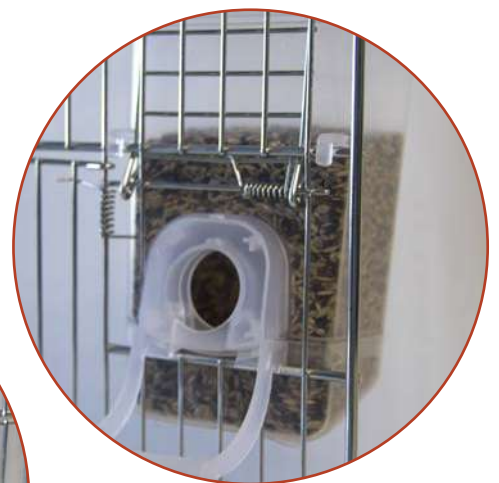
**KG. 0,240**



**SENZA PORTINA**



**PORTINA MONTATA AL CONTRARIO**



**PORTINA PIEGATA**

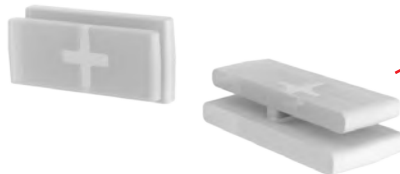
## Art. 323/G



8 033844 764424



**Adattatore universale per Mangiatoia Eclissi**  
*Universal adapter for Eclipse Feeder*  
*Adaptador universal para comedero Eclipse*  
*Adaptateur universel pour mangeoire Eclipse*



## Art. 323/I



8 033844 764427



**Supporti per attacco interno gabbia per Mangiatoia Eclissi**  
*Cage's internal attachment for Eclipse Feeder*  
*Suporte para ataque interno jaula para comedero Eclipse*  
*Soutien d'attaque a l'interieure cage pour mangeoire Eclipse*



Art. 117



- cm. 14 x 10 x 18h  
**Mangiatoia economy plus**  
*Economy plus feeder*  
*Comedero economy plus*  
*Mangeoire economique plus*



KG. 1

Art. 169



- cm. 10 x 9 x 15,5h  
**Mangiatoia economy Diamant**  
*Diamant economy feeder*  
*Comedero economy Diamant*  
*Mangeoire economique Diamant*



KG. 0,250

Art. 155



- cm. 14 x 10 x 21h  
**Mangiatoia economy dispenser**  
*Economy feeder dispenser*  
*Comedero economy dispenser*  
*Mangeoire economique dispenser*



KG. 1

Art. 115



- cm. 8 x 7 x 16h  
**Mangiatoia economy**  
*Economy feeder*  
*Comedero economy*  
*Mangeoire economique*



KG. 0,250



KG. 0,250

Art. 115/A



- cm. 8 x 7 x 16h  
**Mangiatoia economy**  
*Economy feeder*  
*Comedero economy*  
*Mangeoire economique*

Art. 116



- cm. 8 x 7 x 16h  
**Mangiatoia economy**  
*Economy feeder*  
*Comedero economy*  
*Mangeoire economique*



KG. 0,250



KG. 0,250

Art. 116/A



- cm. 8 x 7 x 16h  
**Mangiatoia economy**  
*Economy feeder*  
*Comedero economy*  
*Mangeoire economique*

## Art. 022



– cm. 8 x 4 x 3h  
**Mangiatoia piccola c/ferri**  
 Small feeder with irons  
 Comedero pequeño con gancho  
 Mangeoire petit avec crochet



## Art. 022/G



– cm. 8 x 4 x 3h  
**Mang. piccola c/ferri con griglia**  
 Small feeder with irons and grid  
 Comedero pequeño c/alambres y huella  
 Mangeoire petit avec crochet et grille



## Art. 125



– cm. 8 x 4 x 3h  
**Mangiatoia piccola g/plastica**  
 Small feeder with plastic hooks  
 Comedero pequeño con ganchos plastico  
 Mangeoire petit avec crochet de plastique



## Art. 125/G



– cm. 8 x 4 x 3h  
**Mangiatoia piccola g/plastica e griglia**  
 Small feeder w/plastic hooks and grid  
 Comedero pequeño c/ganchos plastico y rejilla  
 Mangeoire petit a/crochet de plastique et grille



## Art. 045



– cm. 10,5 x 5 x 3,5h  
**Mangiatoia media c/ferri**  
 Medium feeder with irons  
 Comedero mediano con alambres  
 Moyenne mangeoire avec fers



## Art. 053



– cm. 9 x 5 x 4,4h  
**Mangiatoia Parma**  
 Parma feeder  
 Comedero Parma  
 Mangeoire Parma



## Art. 054



– cm. 9 x 5 x 4,4h  
**Mangiatoia Parma c/ferri**  
 Parma feeder with irons  
 Comedero Parma con alambres  
 Mangeoire Parma avec crochet en fer



Art. 173



8 033844 762003



– cm. 10,5 x 5,5 x 5h  
**Mangiatoia Dalia**  
*Dalia feeder*  
*Comedero Dalia*  
*Mangeoire Dalia*



Art. 172



8 033844 761990



– cm. 10,5 x 5,5 x 5h  
**Mangiatoia Ines**  
*Ines feeder*  
*Comedero Ines*  
*Mangeoire Ines*



Art. 127



8 033844 761471



– cm. 9 x 7 x 6,5h  
**Mangiatoia pappagallo g/plastica**  
*Parrot feeder with plastic hooks*  
*Comedero papagayo con ganchos plastico*  
*Mangeoire perroquet avec crochet de plastique*



Art. 015



8 033844 760214



– cm. 9 x 7 x 6,5h  
**Mangiatoia pappagallo c/ferri**  
*Parrot feeder with irons*  
*Comedero papagayo con alambres*  
*Mangeoire perroquet avec crochet*



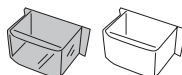
Art. 043



8 033844 760528



– cm. 10 x 4,5 x 3h  
**Mangiatoia pappagallo con alette**  
*Parrot feeder with wings*  
*Comedero para papagayo con alas*  
*Mangeoire pour perroquet avec ailes*



## Art. 313



8 033844 763505



– cm. 7,5 x 5,5 x 4h

**Mangiatoia Olanda c/ganci plastica***Netherlands Feeder w/plastic hooks**Comedero Holanda c/ganchos plastico**Mangeoire Hollande avec crochet plastique*

## Art. 320



8 033844 763574



– cm. 7,5 x 5,5 x 0,5h

**Antispreco per art. 313/314***Non-waste cover for art. 313/314**Anti-derroche art. 313/314**Anti-gaspillage art. 313/314*

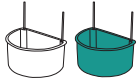
## Art. 314



8 033844 763512



– cm. 7,5 x 5,5 x 4h

**Mangiatoia Olanda c/ganci in ferro***Netherlands Feeder w/iron hooks**Comedero Holanda c/ganchos hierro**Mangeoire Hollande avec crochet de fer*

## Art. 324



8 033844 763802



– cm. 7 x 7 x 3h

**Mangiatoia per svezzamento***Weaning feeder**Comedero para destete**Mangeoire pour sevrage*

## Art. 003



8 033844 760030



– cm. 18 x 4 x 3h

**Mangiatoia ganci plastica***Feeders with plastic hooks**Comedero gancho plastico**Mangeoire avec crochet plastique*

Art. 025/G



— cm. 20 x 6 x 4h  
**Mangiatoia universale con griglia**  
*Universal feeder with grid*  
*Comedero universal con rejilla*  
*Mangeoire universel avec grille*



Art. 051



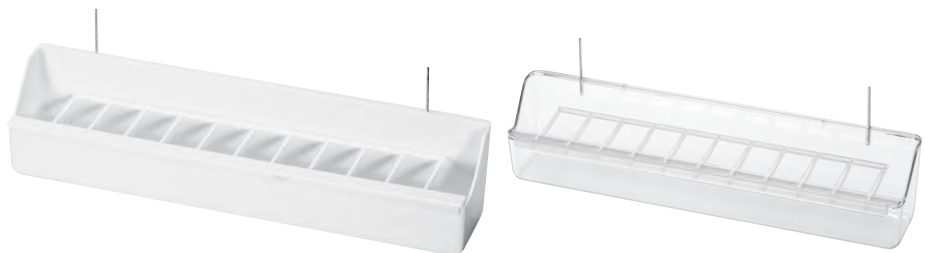
— cm. 30 x 5,5 x 4h  
**Mangiatoia Reggio**  
*Reggio feeder*  
*Comedero Reggio*  
*Mangeoire Reggio*



Art. 052



— cm. 30 x 5,5 x 4h  
**Mangiatoia Reggio c/ferri**  
*Reggio feeder with irons*  
*Comedero Reggio con alambres*  
*Mangeoire Reggio avec crochet*



Art. 100



— cm. 39 x 5,5 x 6,5h  
**Mangiatoia per voliera trasparente c/ferri**  
*Transparent aviary feeder with irons*  
*Comedero transp. para voladora con alambre*  
*Mangeoire transparent pour voliere*





## Art. 101



– cm. 39 x 5,5 x 6,5h  
**Mangiatoia per voliera bianca c/f**  
 White aviary feeder with irons  
 Comedero blanco para voladora con alambre  
 Mangeoire blanc pour voliere avec crochet



## Art. 099



– cm. 39 x 5,5 x 6,5h  
**Mangiatoia per voliera trasparente**  
 Transparent aviary feeder  
 Comedero transp. para voladora  
 Mangeoire transparent pour voliere



## Art. 098



– cm. 39 x 5,5 x 6,5h  
**Mangiatoia per voliera bianca**  
 White aviary feeder  
 Comedero blanco para voladora  
 Mangeoire blanc pour voliere



## Art. 255



– cm. 39 x 5,5 x 6,5h  
**Mangiatoia multipla**  
 Multiple feeder  
 Comedero múltiples  
 Mangeoire Multiple



## Art. 190



– cm. 23 x 7 x 7,5h  
**Mangiatoia Toledo**  
 Toledo Feeder  
 Comedero Toledo  
 Mangeoire Toledo



Art. 071



ø cm.7 x 3,5h  
**Mangiatoia girasole**  
*Sunflower feeder*  
*Comedero Girasol*  
*Mangeoire Tournesol*

Art. 073



ø cm.7 x 3,5h  
**Mangiatoia girasole c/base**  
*Sunflower feeder with base*  
*Comedero Girasol con base*  
*Mangeoire Tournesol avec base*

Art. 072



– cm. 7 x 12 x 3,5h  
**Mangiatoia ovale**  
*Oval feeder*  
*Comedero Ovalado*  
*Mangeoire Ovale*

Art. 119



– cm. 7 x 12 x 3,5h  
**Mangiatoia Titti**  
*Titti feeder*  
*Comedero Titti*  
*Mangeoire Titti*

Art. 094



ø cm.4,5 x 3,5h  
**Portapastoncino lusso**  
*Luxury mash feeder*  
*Portapasta lujo*  
*Port pâtée*

Art. 094/A



ø cm. 4,5 x 4,6h  
**Portapastoncino lusso alto**  
*Luxury high mash feeder*  
*Portapasta lujo alto*  
*Port pâtée luxe haut*

Art. 322



ø cm. 2,5 x 2,7 h  
**Porta Sali Valencia**  
*Cup for salt Valencia*  
*Porta sales Valencia*  
*Port sels Valencia*

Art. 041



ø cm. 3,5 x 3h  
**Portasali**  
*Cup for salt*  
*Portasales*  
*Port Sels*

## Art. 069

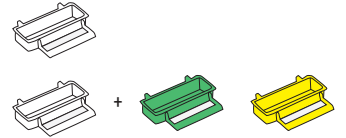


ø cm.4 x 3,5h  
**Portauovo**  
Egg holder  
Portahuevo  
Port Oeuf

## Art. 070



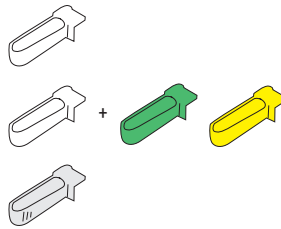
— cm. 9 x 6 x 2h  
**Portabiscotto**  
Biscuit holder  
Portabizcocho  
Port Biscuit



## Art. 057



— cm. 6 x 2 x 2h  
**Portamedicinali**  
Medicine dispenser  
Porta medicamentos  
Port medicament



## Art. 122



— cm.7,5 x 3 x 6h  
**Porta verdura e juta**  
Vegetables/jute holder  
Porta verdura y portajuta  
Port legume et Jute

## Art. 033



**Portaseppia g/plastica**  
Sepie holder with plastic hooks  
Portasepia con ganchos plastica  
Port Seiche avec crochet

## Art. 082



**Portaseppia**  
Sepie holder  
Portasepia  
Port Seiche

## Art. 142



cm. 5 x 3 x 1,5h  
**Pinza universale**  
Universal holder  
Pinza universal  
Pince Universel

## Art. 007



cm. 7 x 3 x 1,5h  
**Molletta gancio**  
Peg hook  
Pinza sujetaverduras plastico  
Pince-crochet

Art. 148



**Kg.1 - lt. 1**  
**Comber mangiatoia abbevertoio**  
*Comber feeder/water dispenser*  
*Comber comedero/bebedero*  
*Comber mangeoire/abreuvoir*



Art. 149



**Kg.1 - lt. 1**  
**Comber mangiatoia/beverino da esterno**  
*External Comber feeder/water dispenser*  
*Comber comedero/bebedero para externo*  
*Comber mangeoire/abreuvoir extérieur*



Art. 005



– cm. 31 x 14 x 15h  
**Mangiatoia colombi griglia plastica**  
*Pigeon feeder plastic grid*  
*Comedero paloma rejilla plastico*  
*Mangeoire pigeons a/grille de plastique*



Art. 006



– cm. 31 x 14 x 13h  
**Mangiatoia colombi griglia ferro**  
*Pigeon feeder iron grid*  
*Comedero paloma rejilla hierro*  
*Mangeoire Pigeons a/grille de fer*



## Art. 049



8 033844 760580



24 PCS.

– cm. 13 x 11 x 13h  
**Bagno Reggio**  
*Reggio bath*  
*Bañera Reggio*  
*Baignoire Reggio*



## Art. 318



8 033844 763550



12 PCS.

– cm. 13 x 11 x 13h  
**Bagno Esterno con ganci in plastica**  
*External Bath with plastic hooks*  
*Bañera Externa con ganchos en plastica*  
*Baignoire exterior avec crochet en plastique*



## Art. 046

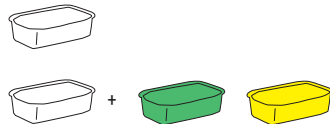


8 033844 760559



60 PCS.

– cm. 13 x 8 x 4h  
**Vaschetta bagno interna**  
*Internal bathtub*  
*Bañera interna*  
*Baignoire interieur*



## Art. 074

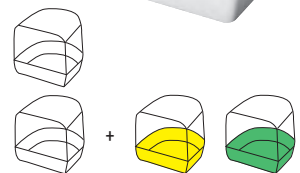


8 033844 760856



12 PCS.

– cm. 13 x 13 x 13h  
**Bagno esterno lux**  
*Lux external bath*  
*Bañera externa lujo*  
*Baignoire exterior luxe*



## Art. 016



8 033844 760221



24 PCS.

– cm. 10 x 10 x 12h  
**Bagno esterno a casetta**  
*House-shaped external bath*  
*Bañera externa caseta*  
*Baignoire exterior maison*



Art. 023



— cm. 24 x 16 x 16h  
**Bagno esterno grande**  
*Large external bathtub*  
*Bañera externa grande*  
*Baignoire exterieur grand*



Art. 023/P



— cm. 24 x 16 x 16h  
**Bagno esterno grande c/porte**  
*Large external bathtub doors*  
*Bañera externa grande con puerta*  
*Baignoire exterieur grand avec porte*



Art. 027



— cm. 24 x 16 x 19h  
**Bagno esterno maxi**  
*External bathtub maxi*  
*Bañera externa maxi*  
*Baignoire exterieur maxi*



Art. 027/P



— cm. 24 x 16 x 19h  
**Bagno esterno maxi c/porta**  
*External bathtub maxi with door*  
*Bañera externa maxi con puerta*  
*Baignoire exterieur maxi avec porte*





Art. 223



– cm. 12,5 x 18 x 16,5h  
**Nido per cardinalini ø 8**  
*Nest for Cardinals ø 8*  
*Nido para Cardenales ø 8*  
*Nid pour Cardinal ø 8*  
**Ø8**



CIOTOLA NIDO ESTRAIBILE



Art. 181



– cm. 12,5 x 18 x 16,5h  
**Nido Samsara ø 10**  
*Samsara nest ø 10*  
*Nido Samsara ø 10*  
*Nid Samsara ø 10*  
**Ø10**



ISPEZIONE SICURA

SCOMPARTO PORTA-UOVA

ADATTABILE A PORTE H 12,5



Art. 379



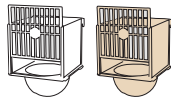
**Scheda cova per nido art. 181/223**  
*Breeding cage for nest art. 181/223*  
*Tarjeta cova para nido art.181/223*  
*Carte couvées pour nid art. 181/223*



Art. 059



– cm. 12 x 12 x 17h  
**Nido esterno lusso**  
External luxury nest  
Nido externo lujo  
Nid exterieur luxe



Ø10

Art. 059/V



– cm. 12 x 12 x 17h  
**Nido esterno lusso**  
External luxury nest  
Nido externo lujo  
Nid exterieur luxe

Ø10

Art. 056



– cm. 10 x 11 x 16h  
**Nido esterno ferro/plastica**  
Iron/plastic external nest  
Nido externo hierro y plastico  
Nid externe fer/plastique

Ø10

Art. 039



**Nido interno**  
Internal nest  
Nido interno  
Nid interne

Ø10

Art. 008



**Nido piccolo**  
Small nest  
Nido pequeño  
Petit nid

Ø9

Art. 325



**Nido Medio**  
Medium Nest  
Nido mediano  
Nid moyen

Ø11

Art. 009



**Nido grande**  
Large nest  
Nido grande  
Grand nid

Ø12



## Art. 376



8 0333944764489



12 PCS.

**Nido interno in plastica Relax**  
*Internal plastic nest Relax*  
*Nido interno en plastico Relax*  
*Nid interieur en plastique Relax*



Ø10

## Art. 382



8 0333116095129



5 PCS.

**Fondello in gommapiuma**  
*Foam-rubber pad*  
*Fondo para nido en gomaespuma*  
*Fond nid en mousse*



Ø12

## Art. 381



8 0333116098304



10 PCS.

**Nido in gommapiuma**  
*Foam-rubber nest*  
*Nido de gomaespuma*  
*Nid en mousse*



Ø10

## Art. 026



8 0333844760351



10 PCS.

**Portanido in ferro**  
*Iron nest holder*  
*Portanido hierro*  
*Porte nid en fer*



Ø10

## Art. 182



8 0333844762096



12 PCS.

**Ciotola nido**  
*Nest cup*  
*Cazoleta nido*  
*Bol nid*



Ø10



## Art. 394



8 0333116095259



10 PCS.

**Portanido in ferro**  
*Iron nest holder*  
*Portanido hierro*  
*Porte nid en fer*



Ø8

## Art. 224



8 0333844762683



12 PCS.

**Ciotola nido**  
*Nest bowl*  
*Cazoleta nido*  
*Bol nid*

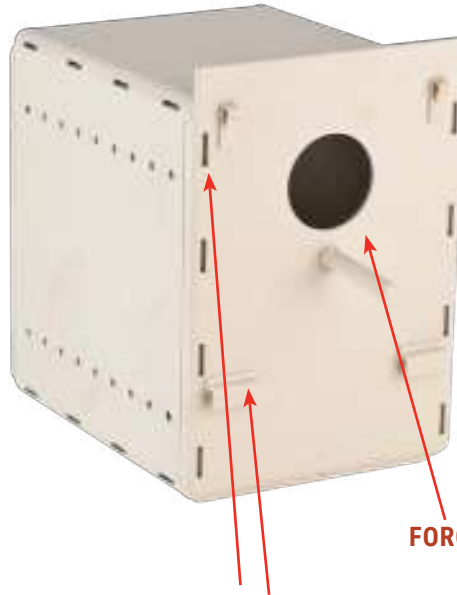


Ø8

Art. 374



— cm. 19,5 x 25 x 27,5h  
**Nido Paradise**  
Paradise Nest  
Nido Paradise  
Nid Paradise



FORO Ø 6 CM

**COMPATIBILE CON TUTTI I TIPI DI PORTA**  
COMPATIBLE WITH ALL DOORS TYPE

**CON SUPPORTO PER  
ONDULATI**  
WITH NEST SUPPORT FOR  
BUDGIER



**PORTA SCHEDA SUL RETRO**



**PERFETTO PER:**

**ONDULATO  
NEOPSEPHOTUS  
AGAPORNIS  
PSEPHOTUS**



FORO Ø 5 CM

**SENZA SUPPORTO PER  
AGAPORNIS**  
WITHOUT NEST SUPPORT  
FOR AGAPORNIS



**FATTO CON MATERIALE ATOSSICO!**  
MADE WITH NO TOXIC MATERIAL!

**COMPLETAMENTE IN PLASTICA - SMONTABILE E LAVABILE**  
MADE IN PLASTIC - DISMOUNTABLE AND WASHABLE  
HECHO EN PLASTICO - DESMONTABLE Y LAVABLE  
FABRIQUE EN PLASTIQUE - DEMONTABLE ET LAVABLE

## Art. 063



— cm. 13 x 10 x 9,5h  
**Nido per esotico**  
 Nest for exotic birds  
 Nido exotico  
 Nid exotique

## Art. 063/G



**Ganci per nido esotico**  
 Hooks for exotic nest  
 Ganchos para nido exotico  
 Crochet pour nid exotique

## Art. 299



**Nido goccia in vimini**  
 Drop wicker nest  
 Nido gotas en mimbre  
 Nid goutte en osier

## Art. 293



**Fondello Nido in Poliestere d. 10**  
 Polyester nest d.10  
 Fondo para nido en poliester d.10  
 Fond nid polyester d. 10

## Art. 084



— cm. 12 x 13 x 16h  
**Nido diamante**  
 Diamond nest  
 Nido diamante  
 Nid Diamant

## Art. 083



— cm. 12 x 13 x 16h  
**Nido perla**  
 Pearl nest  
 Nido perla  
 Nid Perle

## Art. 291



**Fondello Nido in juta d. 8 / 10 / 12**  
 Bird nest pad in juta d. 8 / 10 / 12  
 Fondo para nido en yute d. 8 / 10 / 12  
 Fond nid en jute d. 8 / 10 / 12



## Art. 292



**Fondello Nido in juta - cotone d. 8 / 10 / 12**  
 Wicker and pad bird nest d. 8 / 10 / 12  
 Fondo para nido en yute y mimbre d. 8 / 10 / 12  
 Fond nid en jute et coton d. 8 / 10 / 12



**Art. 290/8**

Ø8



**Fondello Nido in vimini**  
Wicker bird nest  
Fondo para nido en mimbre  
Fond nid osier

**Art. 290/9**

Ø9



**Fondello Nido in vimini**  
Wicker bird nest  
Fondo para nido en mimbre  
Fond nid osier

**Art. 290/10**

Ø10



**Fondello Nido in vimini**  
Wicker bird nest  
Fondo para nido en mimbre  
Fond nid osier

**Art. 290/11**

Ø11



**Fondello Nido in vimini**  
Wicker bird nest  
Fondo para nido en mimbre  
Fond nid osier

**Art. 290/12**

Ø12



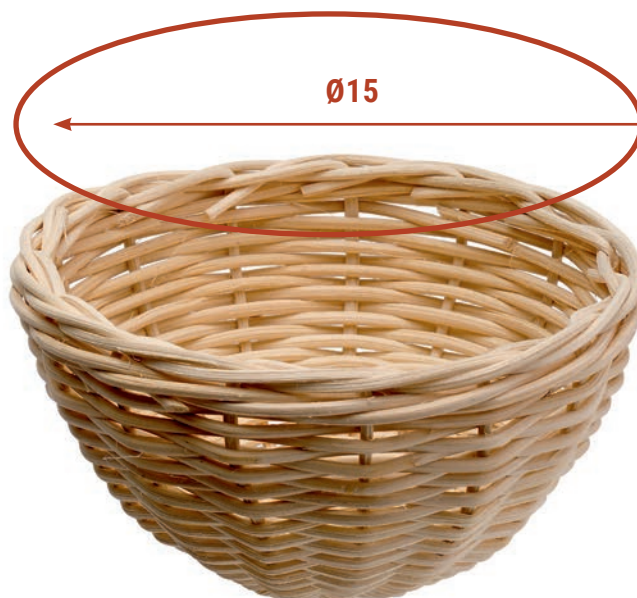
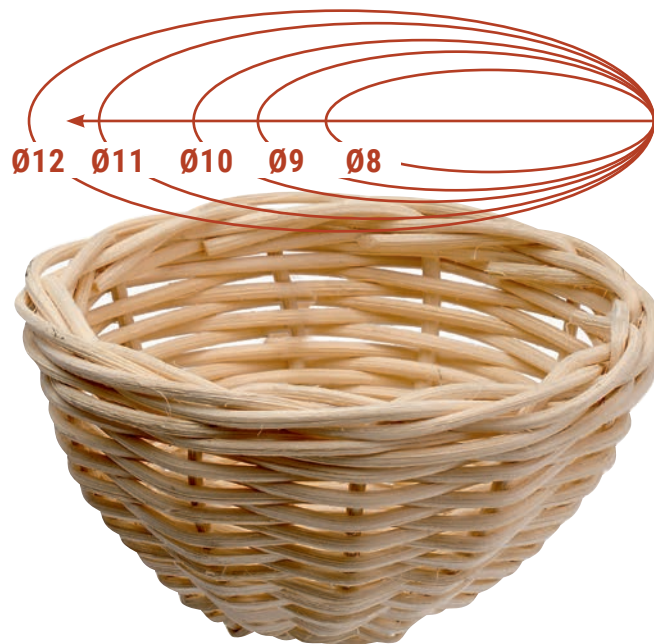
**Fondello Nido in vimini**  
Wicker bird nest  
Fondo para nido en mimbre  
Fond nid osier

**Art. 290/15**

Ø15



**Fondello Nido in vimini**  
Wicker bird nest  
Fondo para nido en mimbre  
Fond nid osier



## Art. 118



ø 7,5 x 7h  
Porta Juta  
Nesting material holder  
Porta Juta  
Ramasseur de Jute



## Art. 118/P



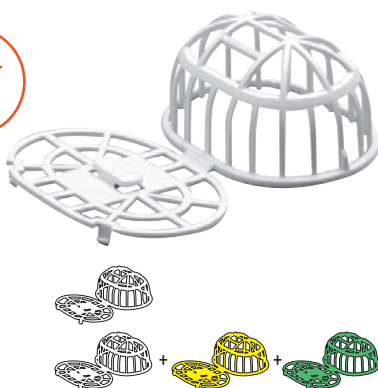
Porta Juta pieno  
Holder with jute  
Porta Juta con jute  
Ramasseur de Jute plein



## Art. 097



– cm. 6 x 8 X 4h  
Raccoglitore universale  
Multi purpose holder  
Portapelo universal  
Ramasseur Universel



## Art. 097/P



Raccoglitore juta pieno  
Jute holder full  
Porta-Juta lleno  
Ramasseur de Jute plein



## Art. 294

Confezione di Juta  
Juta's packaging  
Confeccion de Yute  
Confection de Jute



## Art. 296

Confezione di Filo di Cotone  
Cottons's packaging  
Confeccion de Hilo de coton  
Confection de Fil de coton



## Art. 297

Cocco-Sisal-Juta-Cotone  
Cocco-Sisal-Juta-Cotton  
Cocco-Sisal-Yute-Coton  
Coque-Sisal-Jute-Coton



## Art. 295

Juta-Cotone  
Juta-Cotton  
Yute-Coton  
Jute-Coton



## Art. 298

Cocco-Sisal-Meliga-Brattea



**IL NUOVO PORTA SCHEDA RIVOLUZIONARIO!**  
**NEW REVOLUTIONARY CARD HOLDER!**  
**EL NUEVO PORTA TARJETA REVOLUCIONARIO!**  
**LE NOUVEAU PORTE-CARTE REVOLUTIONNAIRE!**

**Art. 384**



8 033844 764519



50 PCS.

– cm. 12,5 x 10,5 x 1,2 h  
**Portascheda Twister**  
*Card holder "Twister"*  
*Portatarjeta "Twister"*  
*Porte-carte "Twister"*



**ACCESSORI INCLUSI**  
**ACCESSORIES INCLUDED**



**Art. 001/A**



8 033844 760016



100 PCS.

– cm. 12,5 x 9  
**Scheda a 4 cove**  
*Card for 4 broods*  
*Tarjeta para 4 covas*  
*Carte pour 4 couvées*



**Art. 385**



8 033844 764526



50 PCS.

– ø 4  
**Schedina Twister**  
*"Twister" Card*  
*Tarjeta "Twister"*  
*Carte "Twister"*



## Art. 306/MONO



8 033116 091046



100 PCS.

**Anelli in plastica monocolore d. 3mm**  
*Monochrome plastic rings d. 3 mm*  
*Anillas en plástico mono color d. 3 mm*  
*Anneaux de plastique monochrome 3 mm*



## Art. 306/MIX



8 033116 091053



100 PCS.

**Anelli in plastica multicolore d. 3mm**  
*Multicolored plastic rings d. 3 mm*  
*Anillas en plástico multicolor d. 3 mm*  
*Anneaux de plastique multicolor 3 mm*



## Art. 307

8



8 033116 096584

12



8 033116 096522

16



8 033116 096560



100 PCS.

**Anelli "click" in plastica d. 8 / 12 / 16**  
*Plastic "click" rings d. 8 / 12 / 16*  
*Anillas abierta en plastica d. 8 / 12 / 16*  
*Anneaux de plastique d. 8 / 12 / 16*



## Art. 308



1000 PCS.

**Anelli in alluminio d. 2,5 / 3 / 4**  
*Aluminium rings d. 2,5 / 3 / 4*  
*Anillas en aluminio d. 2,5 / 3 / 4*  
*Anneaux de aluminium d. 2,5 / 3 / 4*



8 033116 096010

2,5



8 033116 096058

3



8 033116 096065

4



## Art. 308



50 PCS.

**Anelli in alluminio d. 6 / 8 / 10 / 12**  
*Aluminium rings d. 6 / 8 / 10 / 12*  
*Anillas en aluminio d. 6 / 8 / 10 / 12*  
*Anneaux de aluminium d. 6 / 8 / 10 / 12*



8 033116 096072

6



8 033116 096089

8



8 033116 096102

10



8 033116 096126

12



## Art. 309



8 033844 764274



1 PCS.

**Tronchese inox per anellini**  
*Stainless steel nippers for rings*  
*Tijeras en acero para anillitas*  
*Cutter pour anneaux*



Art. 078



— cm. 15 x 3 x 1h  
**Pinza Reggio**  
*Reggio pliers*  
*Pinza Reggio*  
*Pince Reggio*



Art. 010



ø 1,3 x 1,6h  
**Uova piccole**  
*Small eggs*  
*Huevo pequeño*  
*Petit Oeufs*



Art. 010/C



ø 1,3 x 1,6h  
**Uova piccole colorate**  
*Small coloured eggs*  
*Huevo pequeño azul-verde*  
*Petit Oeufs de couleur*



Art. 011



ø 3 x 4h  
**Uova per colombi**  
*Pigeons eggs*  
*Huevos para palomas*  
*Oeufs pour pigeons*



Art. 304



ø 2 x 2,5h  
**Uova medio Parrocchetto**  
*Medium plastic eggs for parakeets*  
*Huevos medianos para pericos*  
*Moyen Oeufs pour perroquet*



Art. 305



ø 2,5 x 3h  
**Uova grandi Parrocchetto**  
*Big plastic eggs for parakeets*  
*Huevos grandes para pericos*  
*Grand Oeufs pour perroquet*





## Art. 036



8 033844 763901



— cm. 29,5 x 32 x 1

**Laterale in plastica per gabbia cova 55***Plastic side for breeding cage 55**Lateral en plastico para jaula de cria 55**Lateral en plastique pour cage d'élevage 55*

## Art. 037/A



8 033844 764021



— cm. 54,5 x 6 x 0,5

**Bandina frontale gabbia cova 55***Drawer's cover for breeding cage 55**Frontal para bandeja jaula de cria 55**Couvercle du tiroir pour cage d'élevage 55*

## Art. 064



8 033844 764014



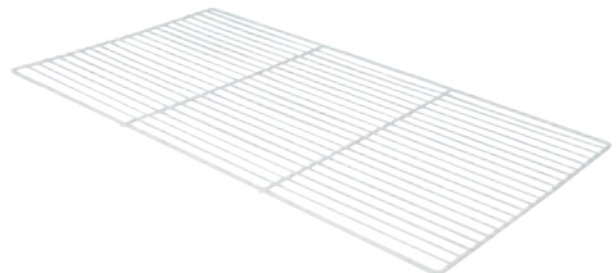
— cm. 54,2 x 30 x 4

**Fondo gabbia cova 55***Bottom part of breeding cage 55**Bandeja para jaula de cria 55**Tiroir pour cage d'élevage 55*

## Art. 319



8 033844 763567

**Griglia per gabbia cova 55***Grill for breeding cage 55**Rejilla para jaula de cria 55**Grille pour cage d'élevage 55*

## GABBIA COVA 58x30 CM LATERALI IN FERRO

Art. 317/B



8 033844 763659



**cm. 58 x 30 x 39h**  
**Gabbia cova plastificata**  
*Plastified breeding cage*  
*Jaula de cria plastificada*  
*Cage de élevage plastifiée*



3 PORTE GRANDI

Art. 317/Z



8 033844 763543



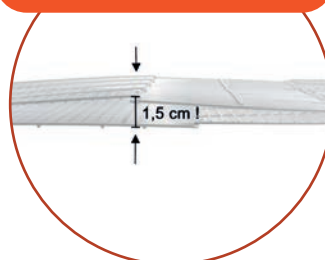
**cm. 58 x 30 x 39h**  
**Gabbia cova zincata**  
*Breeding galvanized cage*  
*Jaula de cria zincada*  
*Cage de élevage zingué*



3 PORTE GRANDI



SALVA SPAZIO



18 conf.  
108 gabbie



cm 78 x 60 x 22h  
22 kg



# GABBIA COVA 58x30 CM LATERALI IN PLASTICA

Art. 326/B



8 033844 763697



**cm. 58 x 30 x 39h**  
**Gabbia cova plastificata**  
*Plastified breeding cage*  
*Jaula de cria plastificada*  
*Cage de élevage plastifiée*



Art. 326/Z



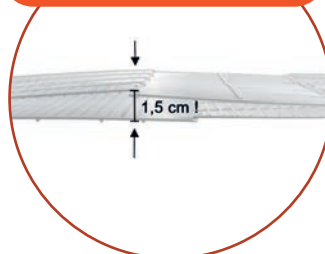
8 033844 763703



**cm. 58 x 30 x 39h**  
**Gabbia cova zincata**  
*Breeding galvanized cage*  
*Jaula de cria zincada*  
*Cage de élevage zingué*



**SALVA SPAZIO**



**18 conf.**  
**108 gabbie**



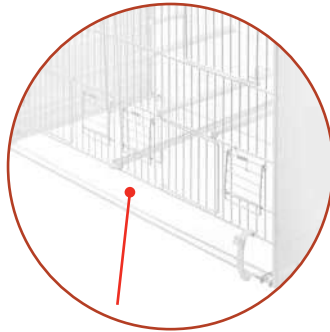
**cm 78 x 60 x 22h**  
**21 kg**

Art. 326/SC

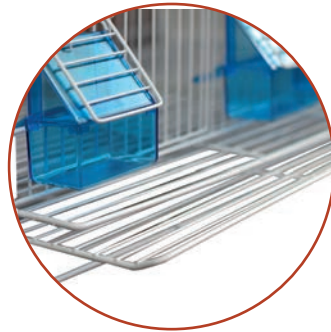
SISTEMA CARTA  
PAPER SYSTEM - SISTEMA PAPEL - SYSTEME PAPIER



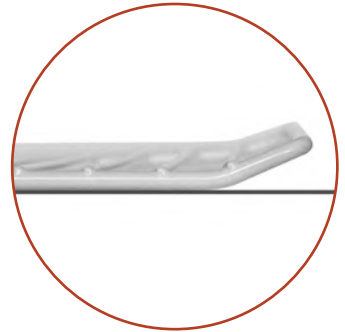
**Gabbia cova**  
Breeding cage  
Jaula de cria  
Cage de élevage



**APERTO**  
OPEN  
ABIERTO  
OUVERTE



**DOPPIA GRIGLIA**  
DOUBLE GRILL  
DOBLE REJILLA  
DOUBLE GRILLE



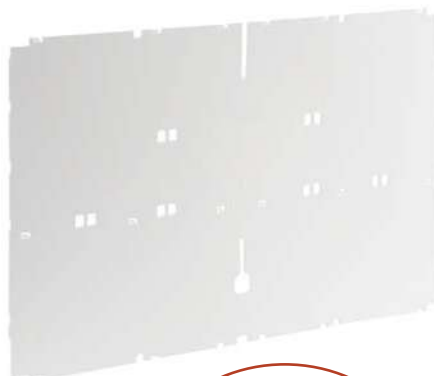
**2° GRIGLIA**  
2° GRILL  
2° REJILLA  
2°GRILLE

ACCESSORI COVA 58x30 CM

Art. 375



- cm. 58x37  
**Parete retro gabbia cova cm 58**  
Back wall for breeding cage cm 58  
Pared trasera para jaula de cria cm 58  
Mur d'arrière pour cage d'élevage cm 58



**POSIZIONARE**  
ALL'INTERNO GABBIA  
TO PUT INSIDE THE CAGE



## SISTEMA VOLIERA

### AVIARY SYSTEM - SISTEMA AVIARIO - SYSTEME VOLIERE

**Art. 337**


8 033844 763918



**Sistema Voliera**  
*Aviary System*  
*Sistema voladora*  
*Système Volière*



2x  
+  
2x


**Art. 356**


8 033844 764151



**Gancio per unione gabbie cm 58**  
*Union hook for cage cm 58*  
*Gancho de union jaula cm 58*  
*Crochet pour union cage cm 58*


**Art. 334**


8 033844 763994



**Gancio ferma griglia**  
*Grill's block*  
*Bloc du grille*  
*Bloque para rejilla*


**Art. 327**


8 033844 763710



– cm. 31 x 39 x 2,5  
**Laterale in plastica per gabbia cova 58**  
*Plastic side for breeding cage 58*  
*Lateral en plastico para jaula de cria 58*  
*Lateral en plastique pour cage d'élevage 58*


**Art. 328**

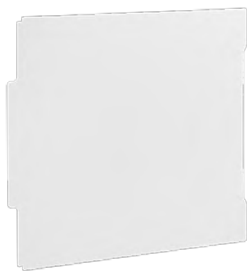

8 033844 763819



– cm. 56,5 x 30 x 3  
**Cassetto per gabbia cova 58**  
*Drawer for breeding cage 58*  
*Bandeja jaula de cria 58*  
*Tiroir pour cage d'élevage 58*



Art. 331



**Divisorio chiuso per gabbia cova 58**  
Closed dividing wall for breeding cage 58  
Pared divisoria cerrada para jaula de cria 58  
Cloison ferme pour cage d'elevage 58

Art. 330

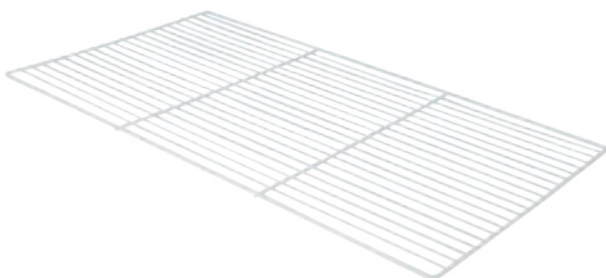


— cm. 32 x 2 x 1  
**Guida per divisorio**  
Slide guide for dividing wall  
Guia para pared divisoria  
Guide pour coison

Art. 332



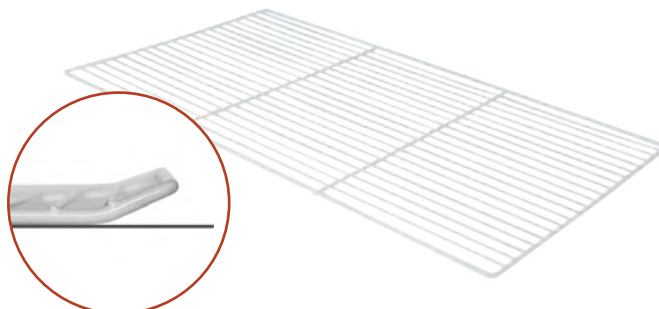
**Griglia per gabbia cova 58**  
Grill for breeding cage 58  
Rejilla para jaula de cria 58  
Grille pour cage d'elevage 58



Art. 333



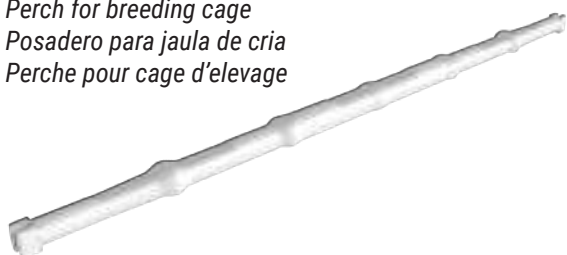
**Griglia incurvata per gabbia cova 58**  
Curved grill for breeding cage 58  
Rejilla incurvada para jaula de cria 58  
Grille incurvee pour cage d'elevage 58



Art. 350



— cm. 31,6  
**Posatoio per gabbia da cova**  
Perch for breeding cage  
Posadero para jaula de cria  
Perche pour cage d'elevage



**COMPATIBILE CON GABBIE COVA DA 55 CM E 58 CM**  
COMPATIBLE WITH BREEDING CAGES CM 55 AND CM 58  
COMPATIBLE CON JAULA DE CRIA CM 55 Y CM 58  
COMPATIBLE AVEC CAGES D'ELEVAGE 55 CM ET 58

Art. 424



cm 54 x 27,5  
**Carta bulinata per cova 58**  
Absorbent paper cage cm 58  
Carta absorbente jaula cm 58  
Papier absorbant cage cm 58



**COMPATIBILE CON GABBIE 326 E 317**  
COMPATIBLE WITH CAGES 326 AND 317  
COMPATIBLE CON JAULAS 326 Y 317  
COMPATIBLE AVEC LES CAGES 326 AT 317



# GABBIA COVA DA 90x40 CM FRONTALE PLASTIFICATO

Art. 420



cm 91,50 x 42 x 44,5h  
**Gabbia cova 90 Positano**  
*Breeding cage 90 Positano*  
*Jaula de cria 90 Positano*  
*Cage d'elevage 90 Positano*



**RETRO IN PLASTICA**  
PLASTIC BACK WALL  
PARED TRASERA EN PLASTICO  
MUR D'ARRIER EN PLASTIQUE



28 conf.  
56 gabbie

Art. 421



cm 91,50 x 42 x 44,5h  
**Gabbia cova 90 Portofino**  
*Breeding cage 90 Portofino*  
*Jaula de cria 90 Portofino*  
*Cage d'elevage 90 Portofino*



cm 94 x 48 x 16,5h  
15 kg

**SALVA SPAZIO**



## GABBIA COVA DA 120x40 CM FRONTALE PLASTIFICATO

Art. 400



8 033844 764656



cm 122 x 42 x 44,5h  
**Gabbia cova 120 Cortina**  
*Breeding cage 120 Cortina*  
*Jaula de cria 120 Cortina*  
*Cage d'élevage 120 Cortina*

**RETRO IN PLASTICA**  
PLASTIC BACK WALL  
PARED TRASERA EN PLASTICO  
MUR D'ARRIER EN PLASTIQUE



**22 conf.**  
**44 gabbie**



**cm 79 x 47 x 22h**  
**17 kg**

Art. 401



8 033844 764663



cm 122 x 42 x 44,5h  
**Gabbia cova 120 Bormio**  
*Breeding cage 120 Bormio*  
*Jaula de cria 120 Bormio*  
*Cage d'élevage 120 Bormio*

**RETRO IN RETE**  
GRILL BACK WALL  
PARED TRASERA DE REJILLA  
MUR D'ARRIER DE GRILLE







# GABBIA COVA DA 120x40 CM FRONTALE ZINCATO

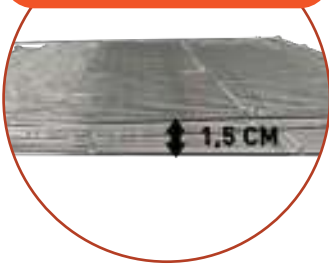
Art. 402



cm 122 x 42 x 44,5h  
**Gabbia cova 120 Sestriere**  
*Breeding cage 120 Sestriere*  
*Jaula de cria 120 Sestriere*  
*Cage d'eleavage 120 Sestriere*



SALVA SPAZIO



22 conf.  
44 gabbie

Art. 403



cm 122 x 42 x 44,5h  
**Gabbia cova 120 Livigno**  
*Breeding cage 120 Livigno*  
*Jaula de cria 120 Livigno*  
*Cage d'eleavage 120 Livigno*



cm 79 x 47 x 22h  
17 kg



SALVA SPAZIO



Art. 396



cm 59,5 x 42 x 3,5h  
**Cassetto gabbia cova 120**  
*Bottom breeding cage 120*  
*Bandeja jaula de cria 120*  
*Tiroir pour cage d'levage 120*

Art. 414



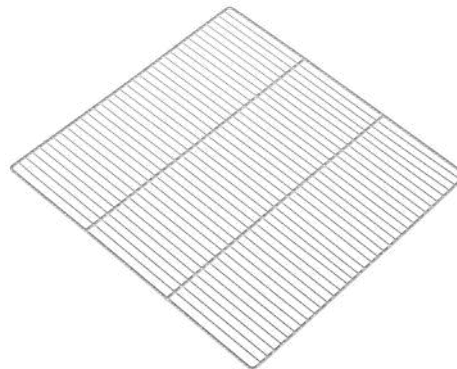
cm 44 x 42 x 4h  
**Cassetto gabbia cova 90**  
*Drawer for breeding cage 90*  
*Bandeja jaula de cria 90*  
*Tiroir pour cage d'levage 90*

Art. 397



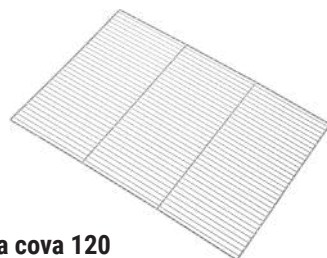
cm 42 x 44,5 x 1,5h  
**Laterale in plastica gabbia cova 90 e 120**  
*Plastic side for breeding cage 90 and 120*  
*Lateral de plastico jaula de cria 90 y 120*  
*Lateral en plastique cage d'levage 90 et 120*

Art. 423



**Griglia bianca per gabbia cova 90**  
*White gril for breeding cage 90*  
*Rejilla blanca para jaula de cria 90*  
*Grille blanche pour cage elevage 90*

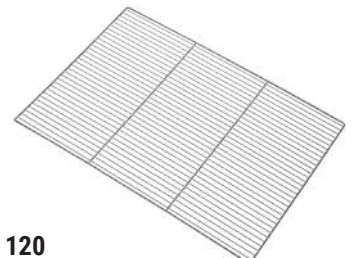
Art. 404



**Griglia bianca per gabbia cova 120**  
*White gril for breeding cage 120*  
*Rejilla blanca para jaula de cria 120*  
*Grille blanche pour cage elevage 120*



Art. 405



**Griglia zincata per gabbia cova 120**  
*Metal gril for breeding cage 120*  
*Rejilla zincada para jaula de cria 120*  
*Grille zingue pour cage elevage 120*



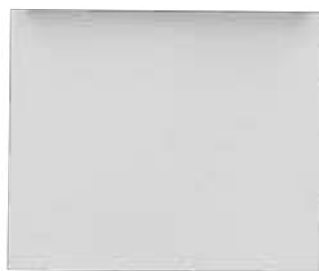
## Art. 411



8 033844 764762



cm 41 x 34,5h

**Divisorio in plastica per cova 90 e 120***Plastic divider breeding cage 90 and 120**Pared divisoria en plastico jaula 90 y 120**Cloison ferme pour cage d'elevage 90 et 120*

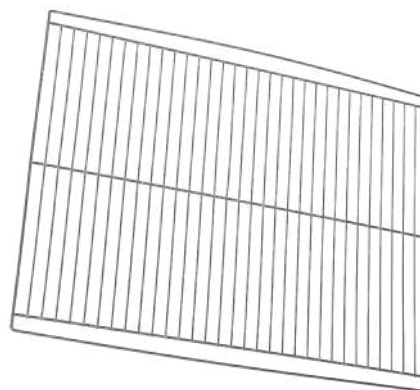
## Art. 413



8 033844 764786



cm 41 x 34,5h

**Divisorio in ferro per cova 90 e 120***Iron dividing wall for cage 90 and 120**Pared divisoria en hierro para jaula 90 y 120**Cloison en fer pour cage 90 et 120*

## Art. 416



8 033844 764816

cm 44 x 42

**Parete retro per gabbia 90***Back wall for breeding cage 90**Pared trasera para jaula de cria 90**Mur d'arriere pour cage d'elevage 90*

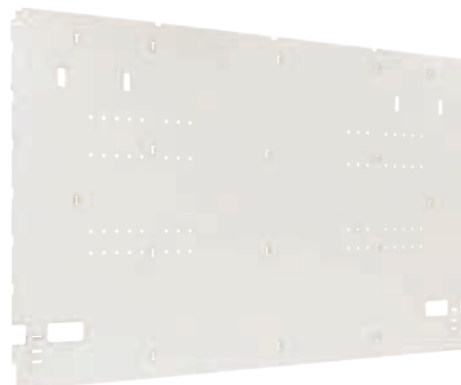
## Art. 399



8 033844 764648



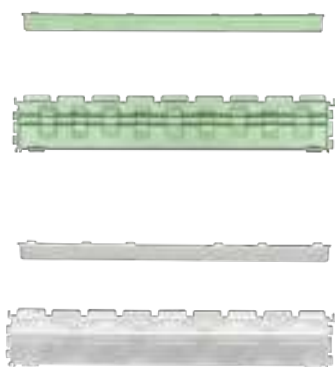
cm 60 x 41,5

**Parete retro per gabbia 120***Back wall for breeding cage 120**Pared trasera para jaula de cria 120**Mur d'arriere pour cage d'elevage 120*

Art. 417



**Kit guide per cova 90**  
Guides for cage 90  
Guida para jaula 90  
Guide pour cage 90



Art. 398



**Kit voliera gabbia cova 90 e 120**  
Aviary kit breeding cage 90/120  
Sistema voladora para jaula de cira 90/120  
System voliere pour cage elevation 90/120



Art. 407



**cm 43**  
**Posatoio con perno per gabbia 90/120**  
Perch with pin for cage 90/120  
Posadero con punta para jaula 90/120  
Perche avec pointe pour cage 90/120



**PER GABBIE CODICE 401/403**  
FOR CAGES 401/403  
PARA JAULA 401/403  
POUR CAGES 401/403

Art. 408



**cm 43**  
**Posatoio per gabbia 90/120**  
Perch for cage 90/120  
Posadero para jaula 90/120  
Perche pour cage 90/120

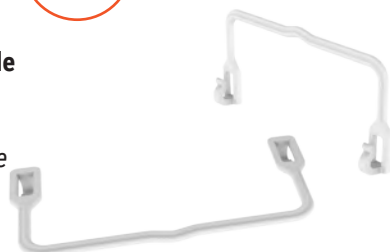


**PER GABBIE CODICE 400/402/420/421**  
FOR CAGES 400/402/420/421  
PARA JAULA 400/402/420/421  
POUR CAGES 400/402/420/421

Art. 409



**Maniglia universale**  
Universal handle  
Manilla universal  
Poignee universelle



Art. 410



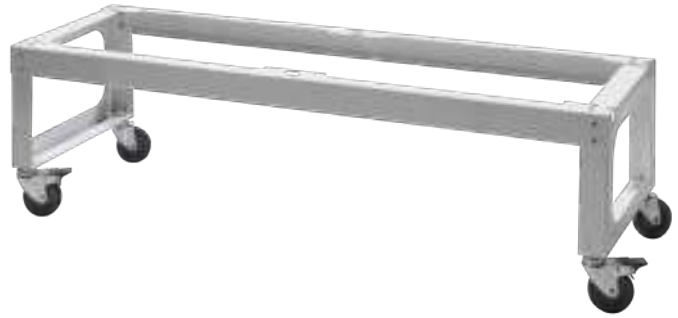
**Porta mangiatoia interno**  
Internal feeder holder  
Porta comedero interno  
Porte mangeoire interieur



Art. 418



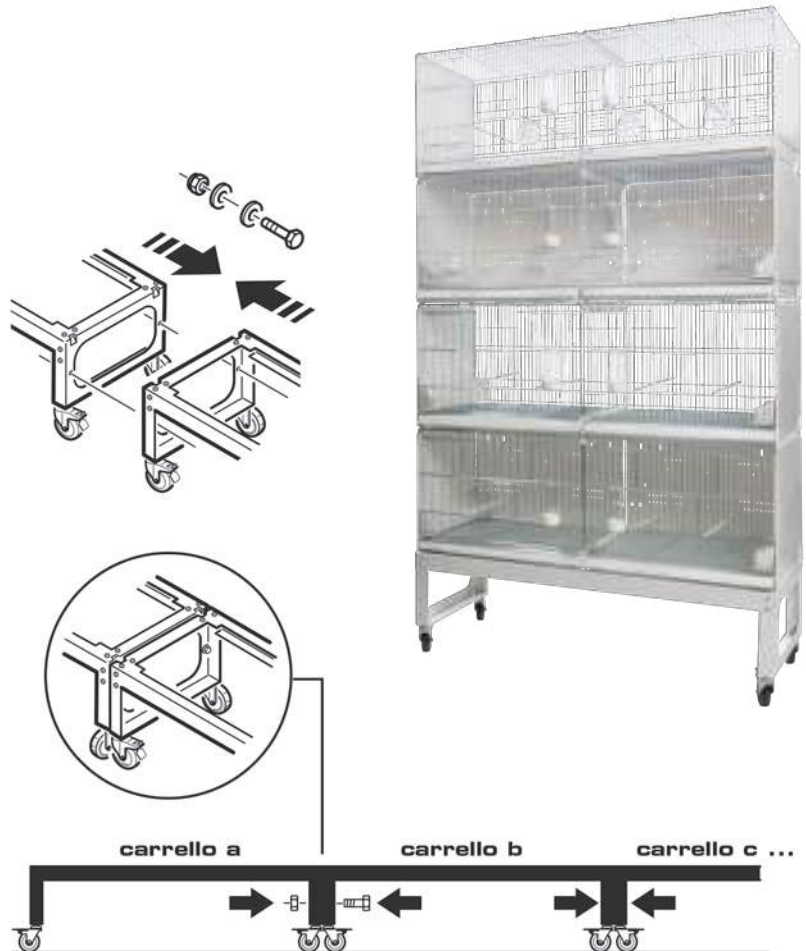
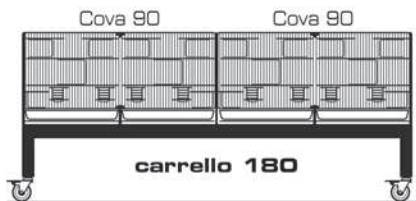
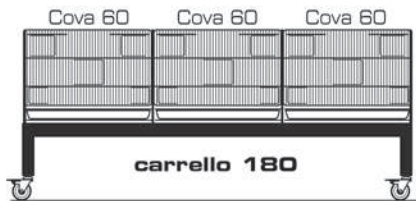
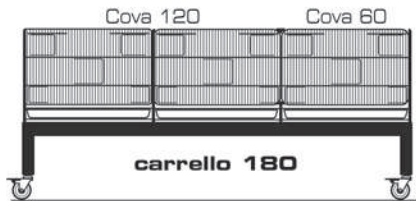
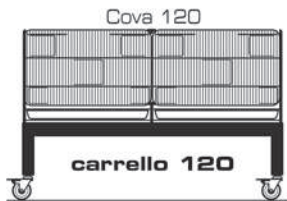
cm 122,50 x 44 x 36h  
**Carrello 120 per gabbie cova**  
*Trolley 120 for breeding cages*  
*Carro 120 para jaulas de cria*  
*Chariot 120 pour cages d'eleavage*



Art. 419



cm 122,50 x 44 x 36h  
**Carrello 180 per gabbie cova**  
*Trolley 180 for breeding cages*  
*Carro 180 para jaulas de cria*  
*Chariot 180 pour cages d'eleavage*



Art. 425



3 033844 764892



cm 57 x 38

**Carta bulinata per cova 120**

*Absorbent paper cage cm 120*

*Carta absorbente jaula cm 120*

*Papier absorbant cage cm120*



**COMPATIBILE CON GABBIE 400/401/402/403**  
*COMPATIBLE WITH CAGES CODE 400/401/402/403*  
**COMPATIBILE CON JAULAS 400/401/402/403**  
*COMPATIBLE AVEC LES CAGES 400/401/402/403*

Art. 426



8 033844 764908



cm 41 x 38

**Carta bulinata per cova 90**

*Absorbent paper cage cm 90*

*Carta absorbente jaula cm 90*

*Papier absorbant cage cm 90*



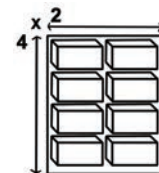
**COMPATIBILE CON GABBIE 420/421**  
*COMPATIBLE WITH CAGES CODE 420/421*  
**COMPATIBILE CON JAULAS 420/421**  
*COMPATIBLE AVEC LES CAGES 420/421*

**TELAI GABBIE COVA DA 58 CM**  
 STRUCTURE FOR BREEDING CAGES CM 58  
 ESTRUCTURAS PARA JAULAS DE CRIA CM 58  
 STRUCTURE POUR CAGES D'ELEVAGE CM 58

**SISTEMA CARTA**  
 PAPER SYSTEM - SISTEMA PAPEL - SYSTEME PAPIER  
**FISSAGGIO A MURO**  
 WALL FASTENING - SE FIJA A LA PARED - FIXATION A MUR

**Art. 340**


**Struttura per sistema carta 2 x 4**  
 Structure for paper system 2 x 4  
 Estructura para sistema papel 2 x 4  
 Structure pour système papier 2 x 4

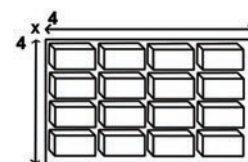


cm. 135 x 41 x 199h

**GUIDE PER SOSTENERE LE GABBIE**

**Art. 341**


**Struttura per sistema carta 4 x 4**  
 Structure for paper system 4 x 4  
 Estructura para sistema papel 4 x 4  
 Structure pour système papier 4 x 4



cm. 255 x 41 x 199h

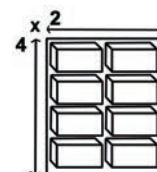
**SISTEMA CON CASSETTO**  
*DRAWER'S SYSTEM - SISTEMA CON BANDEJA - SYSTEM AVEC TIROIR*  
**FISSAGGIO A MURO**  
*WALL FASTENING - SE FIJA A LA PARED - FIXATION A MUR*

**Art. 342**



8 033844 763949

**Strutt. per sistema cassetto 2 x 4**  
*Struct. for drawer's system 2 x 4*  
*Estructura para sistema bandeja 2 x 4*  
*Structure pour système avec tiroir 2 x 4*



**DETTAGLIO DEL RETRO DELLE STRUTTURE**

**cm. 120 x 41 x 199h**

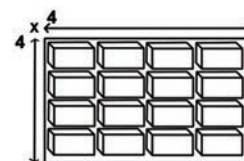


**Art. 343**



8 033844 763956

**Strutt. per sistema cassetto 4 x 4**  
*Struct. for drawer's system 4 x 4*  
*Estructura para sistema bandeja 4 x 4*  
*Structure pour système avec tiroir 4 x 4*



**cm. 240 x 41 x 199h**



## STRUTTURA FRONTE E RETRO

BACK AND FRONT SIDE STRUCTURE  
ESTRUCTURA TRASERA Y DELANTERA  
STRUCTURE AVANT ET ARRIÈRE

### SISTEMA CARTA

PAPER SYSTEM - SISTEMA PAPEL - SYSTEME PAPIER

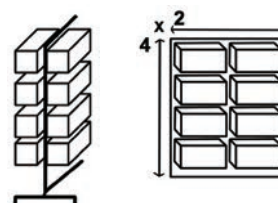
#### Art. 345



**Struttura doppia per sistema carta 2 x 4**  
Double structure for paper system 2 x 4  
Estructura doble para sistema papel 2 x 4  
Structure double pour système papier 2 x 4



16 GABBIE



cm. 135 x 80 x 205h

#### Art. 346



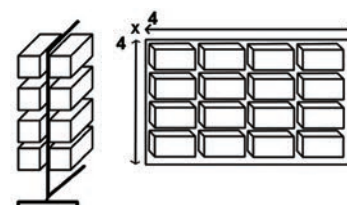
**Struttura doppia per sistema carta 4 x 4**  
Double structure for paper system 4 x 4  
Estructura doble para sistema papel 4 x 4  
Structure double pour système papier 4 x 4



32 GABBIE



**GABBIE NON INCLUDE**  
CAGES NOT INCLUDED



cm. 255 x 80 x 205 h



**SISTEMA CON CASSETTO**  
DRAWER'S SYSTEM - SISTEMA CON BANDEJA - SYSTEM AVEC TIROIR

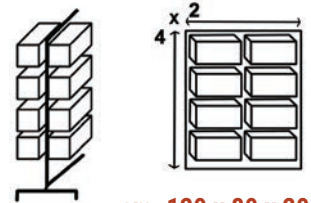
**Art. 347**



**Struttura doppia per sistema cassetto 2 x 4**  
*Double structure for drawer's system 2 x 4*  
*Estructura doble para sistema bandeja 2 x 4*  
*Structure double pour système avec tiroir 2 x4*



**16 GABBIE**



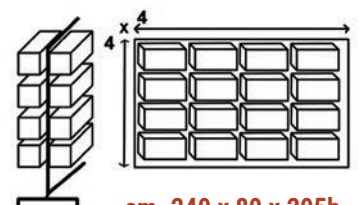
**cm. 120 x 80 x 205h**

**Art. 348**



**Struttura doppia per sistema cassetto 4 x 4**  
*Double structure for drawer's system 4 x 4*  
*Estructura doble para sistema bandeja 4 x 4*  
*Structure pour système avec tiroir 4 x4*

**32 GABBIE**



**cm. 240 x 80 x 205h**

## Art. 344



8 033844 763963



**Ruote per struttura singola art. 340-342**  
*Wheels for single structure art. 340-342*  
*Ruedas estructura individual art. 340-342*  
*Roues pour structure individuel art. 340-342*



cm. 53 x 10h



x2

## Art. 349



8 033844 763987



**- Ø 12 x 33 cm**  
**Rotolo di carta**  
*Paper roll*  
*Rollo de papel*  
*Rouleau de papier*



## GABBIE DA ESPOSIZIONE

### EXPOSITION CAGES - JAULAS EXPOSICION - CAGE EXPOSITION

IDEALE PER LE MOSTRE  
PERFECT FOR SHOWS - PERFECTO PARA MUESTRAS - PARFAIT POUR MONTRE

#### Art. 315/FB1



8 033844 763529



cm. 36 x 17 x 30h

**Gabbia espos. 1 porta frontale bianco**

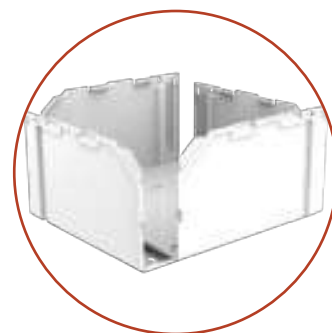
*Exposition cage 1 door white frontal*

*Jaula exposicion 1 puerta y frontal blanco*

*Cage exposition 1 porte frontal blanc*



**IMPILABILI**  
STACKABLE - APILABLE -  
EMPILABLE



#### Art. 315/FN1



8 033844 763538



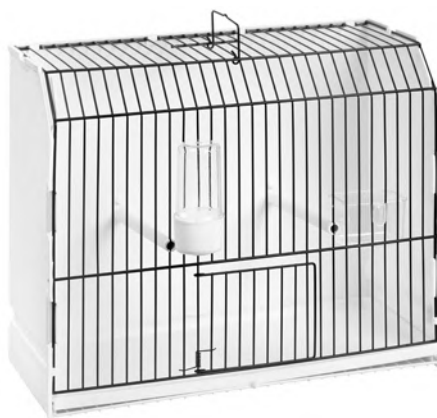
cm. 36 x 17 x 30h

**Gabbia espos. 1 porta frontale nero**

*Exposition cage 1 door black frontal*

*Jaula exposicion 1 puerta y frontal negro*

*Cage exposition 1 porte frontal noir*



**PADELLA**  
DRAWER - BANDEJA - TIROIR



#### Art. 315/SP



8 033844 763758



cm. 36 x 17 x 30h

**Gabbia espos. con foro laterale**

*Exposition cage with lateral hole*

*Jaula exposicion con agujero lateral*

*Cage exposition avec trou lateral*



**SPECIALE CON  
FORO LATERALE**



cm. 58 x 39 x 39h



160 pcs



## IDEALE PER LA PREPARAZIONE

PERFECT FOR PREPARATION - PERFECTO PARA LA PREPARACION - PARFAIT POUR LA PREPARATION

### Art. 315/FN3V



8 033844 763673



cm. 36 x 17 x 30h

**Gabbia espos. verde 3 porte front. nero**

*Green exposition cage 3 door black frontal*

*Jaula exposicion verde 3 puertas y frontal negro*

*Cage exposition vert 3 portes frontal noir*



### Art. 315/FB3



8 033844 763604



cm. 36 x 17 x 30h

**Gabbia espos. 3 porte frontale bianco**

*Exposition cage 3 doors white frontal*

*Jaula exposicion 3 puertas y frontal blanco*

*Cage exposition 3 portes frontal blanc*



**RETE + CASSETTO**  
GRILL + DRAWER  
REJILLA + BANDEJA  
GRILLE + TIROIR



### Art. 315/FB3A



8 033844 763994



cm. 36 x 17 x 30h

**Gabbia espos. 3 porte frontale bianco**

*Exposition cage 3 doors white frontal*

*Jaula exposicion 3 puertas y frontal blanco*

*Cage exposition 3 portes frontal blanc*



**MANGIATOIE IN  
POSIZIONE PIÙ ALTA**



cm. 58 x 39 x 39h



160 pcs

**Art. 315/FN3**



cm. 36 x 17 x 30h

**Gabbia espos. 3 porte frontale nero**

*Exposition cage 3 doors black frontal*

*Jaula exposicion 3 puertas y frontal negro*

*Cage exposition 3 portes frontal noir*



**Art. 315/FZ3**



cm. 36 x 17 x 30h

**Gabbia espos. 3 porte e frontale zincato**

*Exposition cage 3 doors galvanized frontal*

*Jaula exposicion 3 puertas y frontal zincado*

*Cage exposition 3 portes frontal zingue*



**Art. 315/SC**



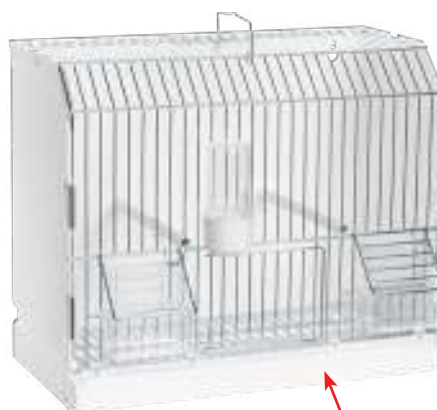
cm. 36 x 17 x 30h

**Gabbia espos. 3 porte sistema carta**

*Exposition cage 3 doors paper system*

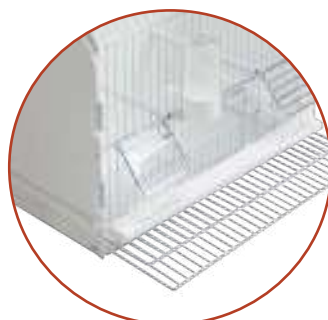
*Jaula exposicion 3 puertas sistema papel*

*Cage exposition 3 portes système papier*



**DOPPIA RETE**  
*DOUBLE GRILL*  
*DOUBLE REJILLA*  
*DOUBLE GRILLE*

**SISTEMA CARTA**  
*PAPER SYSTEM - SISTEMA PAPEL -*  
*SYSTEME PAPIER*



cm. 58 x 39 x 39h



160 pcs

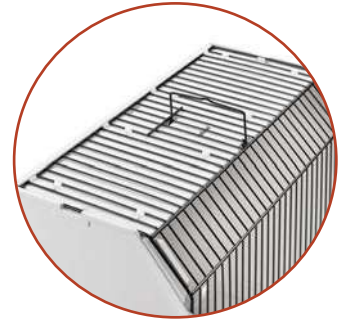
## Art. 315/C



**Coperchio per gabbia esposizione art. 315**  
Cover for exposition cage art. 315  
Tapa para jaula de exposicion art. 315  
Couverture pour cage d'exposition art. 315



**MONTATO DALL'INTERNO**  
FIXED FROM INSIDE  
FIJADO DESDE EL INTERIOR  
FIXE DE L'INTERIEUR



## Art. 315/F



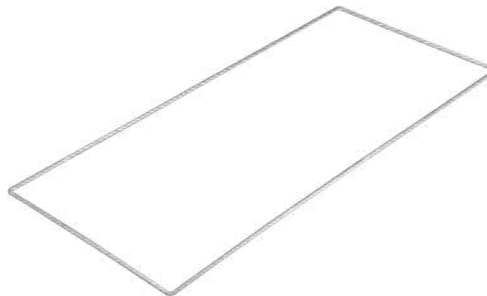
**Cassetto per gabbia esposizione art. 315**  
Drawer for exposition cage art. 315  
Bandeja para jaula de exposicion art. 315  
Tiroir pour cage d'exposition art. 315



## Art. 315/T

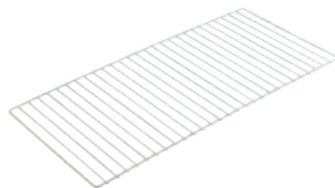


**Telaio per gabbia esposizione art. 315**  
Frame for exposition cage art. 315  
Telar para jaula de exposicion art. 315  
Cadre pour cage d'exposition art. 315



**IDEALE PER TRASFORMARE LA GABBIA IN SISTEMA CARTA**  
IDEAL TO TRASFORM THE CAGE IN PAPER SYSTEM  
IDEAL PARA TRANSFORMAR LA JAULA EN SISTEMA PAPEL  
IDÉAL POUR TRANSFORMER LA CAGE EN SYSTÈME DE PAPIER

## Art. 315/G



**Griglia per gabbia esposizione art. 315**  
Grill for exposition cage art. 315  
Rejilla para jaula de exposicion art. 315  
Grille pour cage d'exposition art. 315



## Art. 315/B



**Bandina per gabbia art. 315**  
Drawer's cover for cage art.315  
Frontal para bandeja jaula art. 315  
Couverture du tiroir cage art. 315



# TELAI PER GABBIE DA ESPOSIZIONE

STRUCTURE FOR EXPOSITION CAGES - ESTRUCTURAS PARA JAULAS DE EXPOSICION - STRUCTURE POUR CAGE D'EXPOSITION

## SISTEMA CARTA

PAPER SYSTEM - SISTEMA PAPEL - SYSTEME PAPIER



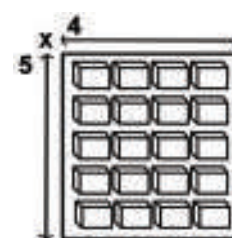
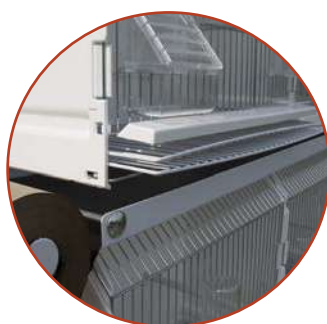
RETRO STRUTTURA

### Art. 351



8 033844 764052

**Struttura per sistema carta 4 x 5**  
*Structure for paper system 4 x 5*  
*Estructura para sistema papel 4 x 5*  
*Structure pour système papier 4 x 5*



cm. 160 x 22 x 198h

### Art. 354



8 033844 764083



**- Ø 10 x 18 cm**  
**Rotolo di carta**  
*Paper roll*  
*Rollo de papel*  
*Rouleau de papier*





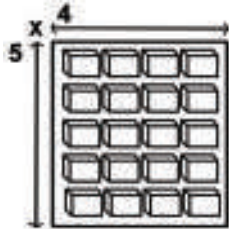


**SISTEMA CON PADELLA**  
DRAWER'S SYSTEM - SISTEMA CON BANDEJA - SYSTEM AVEC TIROIR

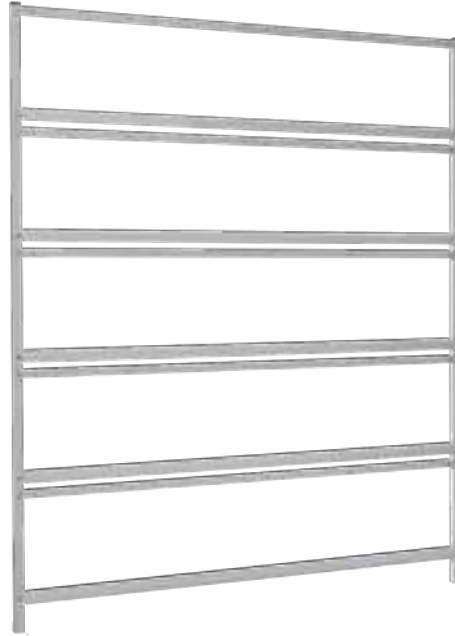
**Art. 352**



**Struttura per sistema cassetto 4 x 5**  
Structure for drawer's system 4 x 5  
Estructura para sistema bandeja 4 x 5  
Structure pour système avec tiroir 4 x 5



cm. 150 x 22 x 198h



RETRO STRUTTURA

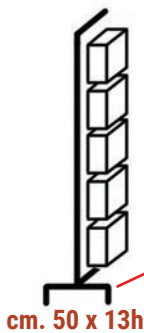


GANCI PER APPENDERE LE GABBIE

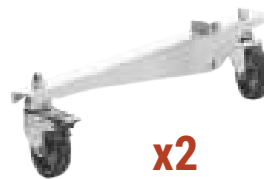
**Art. 353**



**Ruote per struttura singola**  
Wheels for single structure  
Ruedas para estructura individual  
Roues pour structure individuel



cm. 50 x 13h



x2



Art. 021



– cm. 24 x 16 x 20h  
**Gabbia trasportino**  
*Transport cage*  
*Jaula transportín*  
*Cage de transport*



Art. 288



– cm. 24 x 16 x 27,5h  
**Gabbia trasportino XL**  
*Transport cage XL*  
*Jaula transportín XL*  
*Cage de transport XL*



**GRIGLIA INTERNA**  
*INTERNAL GRILL*  
*REJILLA INTERNA*  
*GRILLE INTERIEUR*

Art. 019



– cm. 24 x 16 x 36h  
**Gabbia York**  
*York cage*  
*Jaula York*  
*Cage York*



Art. 055



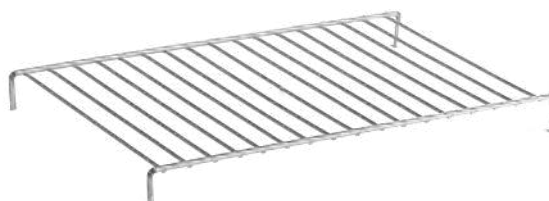
– cm. 24 x 16 x 19h  
**Gabbia per imbecco**  
*Cage for manual feeding*  
*Jaula para empapuzar*  
*Cage pour alimentation*



Art.383



– cm. 22,2 x 14,5 x 2h  
**Griglia per gabbie 20/21/288**  
*Grill for cages 20/21/288*  
*Rejilla para jaulas 20/21/288*  
*Gril pour cages 20/21/288*





## PRIMA DELLE MOSTRE

BEFORE EXHIBITION - ANTES DE LAS EXPOSICIONES - AVANT L'ESPOSITION

### Art. 020



– cm. 24 x 16 x 20h

**Gabbia Cantori**

*Songbird cage*

*Jaula canto*

*Cage pour oiseaux de chant*



## DURANTE LE MOSTRE

DURING EXHIBITION - DURANTE LAS EXPOSICIONES - PENDANT L'ESPOSITION

### Art. 377



– cm. 24,5 x 17 x 18,5h

**Gabbia Cantori per esposizione**

*Songbird cage for exhibition*

*Jaula canto para exposiciones*

*Cage oiseaux de chant pour exposition*



## PERFETTO PER IL TRASPORTO

SUITABLE FOR TRANSPORT - PERFECTA PARA EL TRANSPORTE - PARFAIT POUR LE TRANSPORT

### Art. 428



– cm 48 x 22 x 43h

**Valigia 8 posti verde**

*Case with 8 places green*

*Maleta con 8 lugares verde*

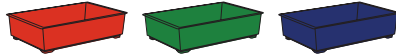
*Valise avec 8 lieux vert*



Art. 061



– cm. 28 x 20 x 7h  
**Fondo bengalino**  
*Bengalino bottom*  
*Fondo jaula bengalino*  
*Fond Bengalino*



Art. 062



– cm. 31 x 20 x 9h  
**Fondo jolly**  
*Jolly bottom*  
*Fondo jaula jolly*  
*Fond jolly*



Art. 075



– cm. 44 x 27 x 8h  
**Fondo gabbia cova**  
*Brooding cage bottom*  
*Fondo jaula cria*  
*Fond pour cage de couvée*



Art. 079



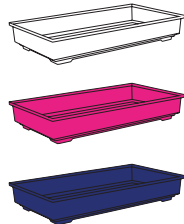
– cm. 38 x 24 x 10,5h  
**Fondo lusso**  
*Lusso bottom*  
*Fondo jaula lujo*  
*Fond luxe*



Art. 095



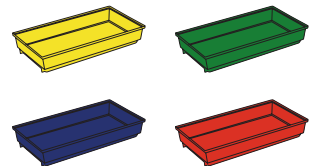
– cm. 58 x 32 x 9h  
**Fondo gabbia cova**  
*Brooding cage bottom*  
*Fondo jaula cria*  
*Fond pour cage de couvée*



Art. 114



– cm. 67,7 x 35,2 x 12,5h  
**Fondo cova**  
*Brooding cage bottom*  
*Fondo jaula de cria*  
*Fond pour cage de couvée*



Art. 042



– cm. 3,5 x 1,5  
**Gancio per fondo gabbia**  
*Hook for cage bottom*  
*Gancho para fondo de jaula*  
*Crochet pour fond de cage*



Art. 077



– cm. 5 x 1,5  
**Gancio fermafondo lungo**  
*Long hook for cage bottom*  
*Gancho largo para fondo jaula*  
*Crochet pour fond de cage*



## Art. 088



24 PCS.



– cm. 6 x 7  
**Portina p/g fili verticali**  
 Door for cage with vertical wires  
 Puerta para jaula hierro vertical  
 Porte pour grille avec vertical fils

## Art. 089



24 PCS.



– cm. 6 x 7  
**Portina p/g fili orizzontali**  
 Cage door with horizontal wires  
 Puerta para jaula hierro horizontal  
 Porte pour grille avec horizontal fils

## Art. 388



1 PCS.



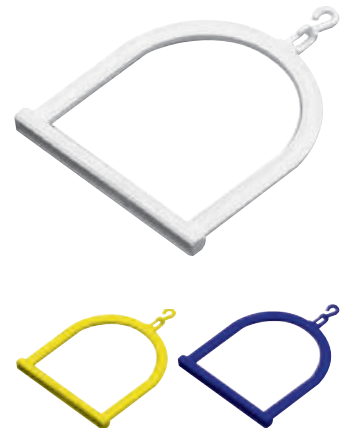
cm 7,5 x 6,5h  
**Portina in ferro con molla**  
 Iron door with spring  
 Porta en hierro con molla  
 Porte en fer avec ressort

**COMPATIBILE CON GABBIE 315**  
 COMPATIBLE WITH CAGES CODE 315  
 COMPATIBILE CON JAULAS 315  
 COMPATIBLE AVEC LES CAGES 315

## Art. 135



144 PCS.



– cm. 9 x 10  
**Altalena**  
 Swing  
 Columpio altalena  
 Balançoire

## Art. 091



1000 PCS.



– cm. 7,5 x 4,5  
**Etichetta per espositore**  
 Display label  
 Etiqueta para expositor  
 Etiquette pour exposant



## Art. 104



1000 PCS.



– cm. 5 x 9  
**Etichetta por. guinzaglio**  
 Collar display label  
 Etiqueta para expositor  
 Etiquette pour exposant



## Art. 050/E



100 PCS.



Ø10 Ø12

**Terminale esterno per posatoio**  
 External perch ends  
 Terminal externo para posador  
 Embout exterior pour perchoir

## Art. 050/I



100 PCS.



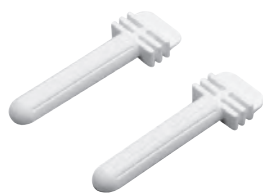
Ø10 Ø12

**Terminale per paletto**  
 Perch ends  
 Terminal para posador  
 Embout perchoir

**Art. 085**



– cm. 5  
**Posatoio plastica**  
Plastic perch  
Posador plastico  
Perche plastique



**Art. 272**



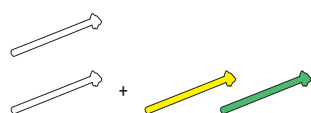
– cm. 16,5  
**Posatoio plastica**  
Plastic perch  
Posador plastico  
Perche plastique



**Art. 081**



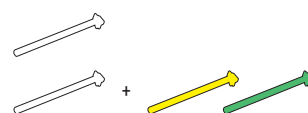
– cm. 18  
**Posatoio**  
Perch  
Posador  
Perche



**Art. 080**



– cm. 22  
**Posatoio**  
Perch  
Posador  
Perche



**Art. 355**



– cm. 11x7,5x32h  
**Posatoio Sunset**  
Sunset Perch  
Percha Sunset  
Perchoir Sunset



**Art. 113**



1 mt.  
**Paletti trafilati**  
Drawn perch  
Percha trefilada  
Perchoir trefilé



∅ 22 / ∅ 18 / ∅ 12 / ∅ 10

**Art. 124**

**Spazzolino d. 16**  
Brush d. 16  
Cepillo d. 16  
Brosse d. 16



**Art. 124/A**

**Spazzolino d. 50**  
Brush d. 50  
Cepillo d. 50  
Brosse d. 50



**Art. 124/B**

**Spazzolino d. 40**  
Brush d. 40  
Cepillo d. 40  
Brosse d. 40



**Art. 124/C**

**Spazzolino d. 75**  
Brush d. 75  
Cepillo d. 75  
Brosse d. 75





Art. 280



8 033844 763307



– cm. 44 x 34 x 20h  
**Maisonette Candy**  
Candy hamster cage  
Jaula para hamster Candy  
Cage Hamster Candy



Art. 370



8 033844 764342



– cm. 52x38x24h  
**Maisonette Cleo**  
Cleo hamster cage  
Jaula para hamster cleo  
Cage pour hamster Cleo



Art. 174



8 033844 762010



– cm. 50 x 38 x 25h  
**Maisonette Baby**  
Hamster cage Baby  
Jaula para hamster Baby  
Cage Hamster Baby





Art. 150



8 033844 761693



– cm. 60 x 40 x 30h

**Maisonette**

*Hamster cage*

*Jaula hamster*

*Cage rongeurs*



Art. 151



8 033844 761703



– cm. 60 x 40 x 30h

**Maisonette lusso**

*Luxury hamster cage*

*Jaula lujo para hamster*

*Cage hamster luxe*



Art. 153



8 033844 761723



– cm. 60 x 40 x 30h

**Maisonette lusso vuota**

*Empty luxury cage*

*Jaula lujo vacia*

*Cage vide de luxe*



Art. 126



8 033844 761464



– cm 15,5 x 11 x 13h

**Casetta per criceto**

*Hamster house*

*Caseta hamster*

*Maison hamster*



Art. 067



8 033844 760788



– cm 14 x 11 x 12h

**Casetta per criceto**

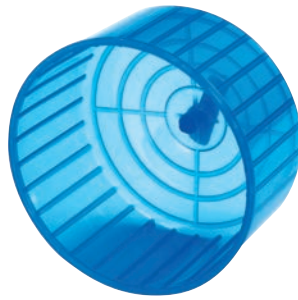
*Hamster house*

*Caseta hamster*

*Maison hamster*



Art. 102



ø 14 x 9h  
**Ruota per criceto chiusa**  
*Closed hamster wheel*  
*Rueda para hamster cerrada*  
*Roue pour hamster fermé*



Art. 047



ø 14 x 9h  
**Ruota per criceto**  
*Hamster wheel*  
*Rueda para hamster*  
*Roue pour hamster*

Art. 086



cc. 90  
**Sifone criceto**  
*Hamster siphon*  
*Bebedero hamster*  
*Abreuvoir Hamster*

Art. 389



cc. 70  
**Sifone roditori Ghiotto**  
*Ghiotto rodents siphon*  
*Bebedero roedor Ghiotto*  
*Abreuvoir rongeurs Ghiotto*

Art. 390



cc. 90  
**Sifone roditori Bijou**  
*Bijou rodents siphon*  
*Bebedero roedor Bijou*  
*Abreuvoir rongeurs Bijou*

Art. 391



cc. 200  
**Sifone Jingle**  
*Jingle siphon*  
*Bebedero Jingle*  
*Abreuvoir Jingle*

Art. 392



cc. 200  
**Sifone Elliot c/ventose**  
*Elliot siphon w/suction caps*  
*Bebedero Elliot c/ventosa*  
*Abreuvoir Elliot a/ventouse*

Art. 393



cc. 400  
**Sifone roditori Elvis**  
*Elvis rodents siphon*  
*Bebedero roedor Elvis*  
*Abreuvoir rongeurs Elvis*

**Art. 166**



**ø 32 mm**  
**Anello con ventosa**  
*Ring with suction cap*  
*Anillo con ventosa*  
*Anneau avec ventouse*

**Art. 167**

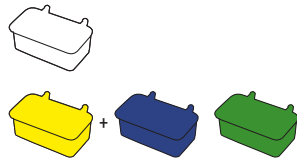


**ø 50 mm**  
**Anello doppio con ventosa**  
*Double ring with suction cap.*  
*Anillo doble con ventosa*  
*Anneau avec double ventouse*

**Art. 044**



**– cm. 7 x 4 x 3h**  
**Mangiatoia criceto**  
*Hamster feeder*  
*Comedero hamster*  
*Mangeoire hamster*



**Art. 144**



**ø 7 x 3,5h**  
**Mangiatoia criceto rotonda con base**  
*Hamster feeder with base*  
*Comedero hamster redondo con base*  
*Mangeoire pour hamster avec base*

**Art. 165**



**– cm. 25 x 9 x 16h**  
**Portafieno**  
*Hay holder*  
*Porta heno*  
*Porteur de foin*

**Art. 300**



**Confezione di fibra di cotone per Roditori**  
*Rodent cotton fibre's packaging*  
*Confecion de fibra de coton para roedores*  
*Paquet de fibres de coton pour rongeurs*



**Art. 154**



**Trappola per topi**  
*Mouse trap*  
*Trampa para ratones*  
*Souricière*



# RODITORI e TARTARUGHE

## tartarughiere

### Art. 163



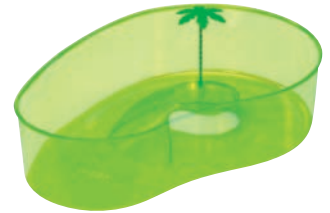
– cm. 31,5 x 22 x 7h  
**Tartarughiera Oasi**  
 Oasis turtle tank  
 Tortuguera Oasis  
 Bacs á tortues Oasi



### Art. 198



– cm. 40 x 27 x 9,5h  
**Tartarughiera Oasi Maxi**  
 Oasis Maxi turtle tank  
 Tortuguera Oasis Maxi  
 Bacs á tortues Oasi Maxi



### Art. 183



– cm. 43 x 32 x 9,5h  
**Tartarughiera Maxi**  
 Maxi turtle tank  
 Tortuguera Maxi  
 Bacs á tortues Maxi



### Art. 164



ø 24,5 x 6,5h  
**Tartarughiera Laguna**  
 Laguna turtle tank  
 Tortuguera Laguna  
 Bacs á tortues Laguna



### Art. 312



– cm 44 x 34 x 12h  
**Tartarughiera Ischia**  
 Ischia Turtletank  
 Tortuguera Ischia  
 Bacs á tortues Ischia



### Art. 281



– cm. 44 x 34 x 20h  
**Tartarughiera Daffy**  
 Daffy turtle tank  
 Tortuguera Daffy  
 Bacs á tortues Daffy



**Art. 371**



8 033844 764359



– **cm. 52x38x24h**  
**Tartarughiera Toby**  
*Turtle tank Toby*  
*Tortuguera Toby*  
*Bacs à tortues Toby*



**Art. 372**



8 033844 764366



– **cm. 52x38x24h**  
**Tartarughiera Sammy**  
*Turtle tank Sammy*  
*Tortuguera Sammy*  
*Bacs à tortues Sammy*



**Art. 123**



8 033844 761402



– **cm. 7 x 3**  
**Gancio fermafondo universale**  
*Universal bottom hook*  
*Gancho universal para fondo*  
*Universel crochet*



## Art. 175



8

033844762027



3 PCS.

– cm. 50 x 38 x 25h  
**Tartarughiera Baby**  
 Small turtle tank  
 Tortuguera Baby  
 Bacs á tortues Baby



## Art. 176



8

033844762034



3 PCS.

– cm. 50 x 38 x 25h  
**Tartarughiera Elba**  
 Elba turtle tank  
 Tortuguera Elba  
 Bacs á tortues Elba



## Art. 152



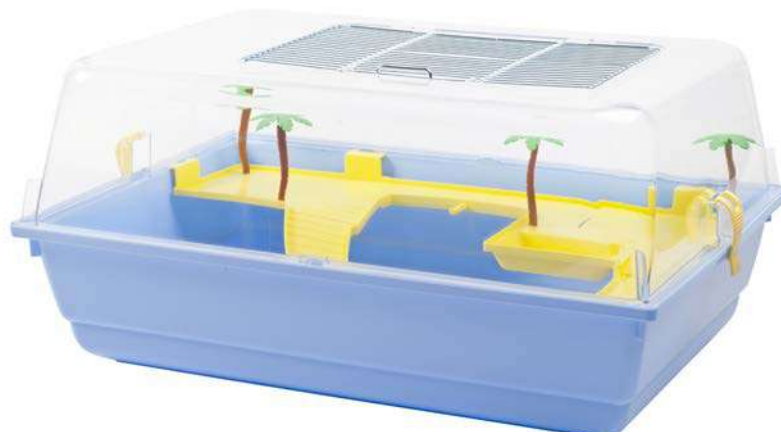
8

033844761716



2 PCS.

– cm. 60 x 40 x 30h  
**Tartarughiera**  
 Turtle tank  
 Tortuguera  
 Bacs á tortues









## Art. 286



8 033844 763352



— cm. 49 x 33 x 31h  
**Trasportino Calipso**  
 Calipso transporter  
 Transportino Calipso  
 Cage de transport Calipso



## Art. 189



8 033844 762171



— cm. 43 x 26 x 37h  
**Trasportino Penelope**  
 Penelope transporter  
 Transportino Penelope  
 Cage de transport Penelope



Art. 283



– cm. 44 x 34 x 12h  
**Toilette Felix con cornice**  
Complete Felix toilet  
Bano Felix con cornisa  
Toilette Felix avec cadre



Art. 138



– cm. 49 x 38 x 14,5h  
**Toilette Silvestro completa**  
Complete Silvestro toilet  
Toilet Silvestro completa  
Toilette Silvestro avec cadre



Art. 156



– cm. 9 x 25 x 3,5h  
**Paletta igienica gatto**  
Waste shovel  
Paleta higienica  
Palette hygienique pour chat



Art. 143



– cm. 16 x 40  
**Ricambi sac. Snoopy 24 pz.**  
Snoopy refill bags 24 pz.  
Recambio bolsa recogedor higienico Snoopy  
Pieces de Rechange pour Snoopy





## Art. 357



8 033844 764168



**Ciotola Minou**  
*Bowl Minou*  
*Comedero gato Minou*  
*Bol Minou*

Lt. 0,2



## Art. 358



8 033844 764175



**Ciotola Bizet**  
*Bowl Bizet*  
*Comedero gato Bizet*  
*Bol Bizet*

Lt. 0,3



## Art. 359



8 033844 764182



**Ciotola Matisse**  
*Bowl Matisse*  
*Comedero gato Matisse*  
*Bol Matisse*

Lt. 0,5



## Art. 360



8 033844 764199



**Ciotola doppia Romeo**  
*Double Bowl Romeo*  
*Comedero doble Romeo*  
*Double Bol Romeo*

Lt. 0,3 x 2



Art. 162/18



**Ciotola**  
Bowl  
Comedero  
Bol  
Lt. 1,5



Art. 162/20



**Ciotola**  
Bowl  
Comedero  
Bol  
Lt. 1,2



Art. 162/T



**Ciotola tripla**  
Triple bowl  
Comedero tripla  
Triple Bol



Art. 162/14



**Ciotola per Cocker**  
Cocker Bowl  
Comedero para Cocker  
Bol pour Cocker  
Lt. 0,85



Art. 162/24



**Ciotola**  
Bowl  
Comedero  
Bol  
Lt. 3,5



Art. 162/26



**Ciotola**  
Bowl  
Comedero  
Bol  
Lt. 6



## INDICE PER ARTICOLO

CODICE	DESCRIZIONE	PAG.
001/A	Scheda a 4 cove	53
003	Mangiatoia ganci plastica	38
005	Mangiatoia colombi griglia plastica	43
006	Mangiatoia colombi griglia ferro	43
007	Molletta gancio	42
008	Nido piccolo	47
009	Nido grande	47
010	Uova piccole	55
010/C	Uova piccole colorate	55
011	Uova grandi	55
012	Mangiatoia att. dir. piccola	32
013	Mangiatoia att. dir. grande	32
015	Mangiatoia pappagallo c/ferri	37
016	Bagno esterno a casetta	44
017	Mangiatoia Napoli	30
018	Beverino corto	24
018/F	Beverino corto fumè	24
019	Gabbia York	81
020	Gabbia cantori da preparazione	82
021	Gabbia trasportino	81
022	Mangiatoia piccola c/ ferri	36
022/G	Mangiatoia piccola c/ ferri con griglia	36
023	Bagno esterno grande	45
023/P	Bagno esterno grande c/porte	45
024	Mangiatoia esterna	31
025/G	Mangiatoia universale con griglia	39
026	Portanido in ferro Ø 10	48
027	Bagno esterno maxi	45
027/P	Bagno esterno maxi c/porta	45
028	Mangiatoia mezzaluna	32
033	Portaseppia g/plastica	42
034	Sifone Firenze	24
034/F	Sifone Firenze fumè	24
035	Mangiatoia mezzaluna ganci	32
036	Laterale in plastica per gabbia cova 55	56
037/A	Bandina frontale gabbia cova 55	56
038	Sifone lungo	24
039	Nido interno	47
041	Portasali	41
042	Gancio per fondo gabbia	83
043	Mangiatoia rett. media c/alette	37
044	Mangiatoia criceto	90
045	Mangiatoia piccola rett. c/ferri	36
046	Vaschetta bagno interna	44
047	Ruota per criceto	89
049	Bagno Reggio	44

CODICE	DESCRIZIONE	PAG.
050/I	Terminale per paletto	84
050/E	Terminale esterno per posatoio	84
051	Mangiatoia Reggio	39
052	Mangiatoia Reggio c/ferri	39
053	Mangiatoia Parma	36
054	Mangiatoia Parma c/ ferri	36
055	Gabbia per imbecco	81
056	Nido esterno ferro/pl.	47
057	Portamedicinali	42
058	Sifone per polli	30
059	Nido esterno lusso	47
059/V	Nido esterno lusso	47
060/A	Sifone Lucca con anello	25
061	Fondo bengalino	83
062	Fondo jolly	83
063	Nido per esotico	50
063/G	Ganci per nido esotico	50
064	Fondo gabbia cova 55	56
065	Sifone mang. pappagalli	29
066	Sifone Napoli	29
067	Casetta per criceto	88
068	Sifone Reggio	25
069	Portauovo	42
070	Portabiscotto	42
071	Mangiatoia girasole	41
072	Mangiatoia ovale	41
073	Mangiatoia girasole c/base	41
074	Bagno esterno lux	44
075	Fondo gabbia cova	83
077	Gancio fermafondo lungo	83
078	Pinza Reggio	55
079	Fondo lusso	83
080	Posatoio	85
081	Posatoio	85
082	Portaseppia	42
083	Nido perla	50
084	Nido diamante	50
085	Posatoio plastica	85
086	Sifone criceto	89
087	Sifone banana	25
088	Portina p/g fili verticali	84
089	Portina p/g fili orizzontali	84
091	Etichetta per espositore	84
094	Portapastoncino lusso	41
094/A	Portapastoncino lusso alto	41
095	Fondo gabbia cova	83

## INDICE PER ARTICOLO

CODICE	DESCRIZIONE	PAG.
097	Raccogliore universale	52
097/P	Raccogliore universale pieno	52
098	Mangiatoia per voliera bianca	40
099	Mangiatoia per voliera trasparente	40
100	Mangiatoia per voliera trasparente c/ferri	39
101	Mangiatoia per voliera bianca c/f	40
102	Ruota per criceto chiusa	89
103	Mangiatoia Spagna 2000	31
104	Etichetta por. guinzaglio	84
105	Mangiatoia Italia 2000	31
113	Paletti trafilati	85
114	Fondo cova	83
115	Mangiatoia economy Ø 24	35
115/A	Mangiatoia economy Ø 28	35
116	Mangiatoia economy Ø 24	35
116/A	Mangiatoia economy Ø 28	35
117	Mangiatoia economy plus	35
118	Porta juta	52
118/P	Porta juta pieno	52
119	Mangiatoia Titti	41
122	Porta verdure e juta	42
123	Gancio fermafondo universale	93
124	Spazzolino Ø 16	85
124/A	Spazzolino Ø 50	85
124/B	Spazzolino Ø 40	85
124/C	Spazzolino Ø 75	85
125	Mangiatoia piccola g/plastica	36
125/G	Mangiatoia piccola g/plastica e griglia	36
126	Casetta per criceto	88
127	Mangiatoia pappagallo g/plastica	37
128	Beverino lungo lusso	22
129	Erogatore magic	27
130	Beverino magic	28
131	Sifone Marta	23
134	Sifone Firenze lusso	24
135	Altalena	84
138	Toilette Silvestro completa	97
142	Pinza universale	42
143	Ricambi sac. Snoopy 24 pz.	97
144	Mangiatoia criceto rotonda con base	90
146	Beverino per medicinali	21
147	Mangiatoia "lusso"	31
148	Comber-mangiatoia abbevert.	43
149	Comber-mangiatoia esterno	43
150	Maisonette	88
151	Maisonette lusso	88

CODICE	DESCRIZIONE	PAG.
152	Tartarughiera	94
153	Maisonette lusso vuota	88
154	Trappola per topi	90
155	Mangiatoia economy dispenser	35
156	Paletta igienica gatto	97
158	Beverino corto lusso	22
160	Mangiatoia Milano	31
162/14	Ciotola Cocker Lt. 0,85	99
162/18	Ciotola Lt. 1,5	99
162/20	Ciotola Lt. 1,2	99
162/24	Ciotola Lt. 3,5	99
162/26	Ciotola Lt. 6	99
162/T	Ciotola tripla	99
163	Tartarughiera Oasi	92
164	Tartarughiera Laguna	92
165	Portafieno	90
166	Anello con ventosa Ø 32 mm	90
167	Anello doppio con ventosa Ø 50 mm	90
169	Mangiatoia economy Diamant	35
170	Beverino Aves	28
171	Beverino Aves	28
172	Mangiatoia Ines	37
173	Mangiatoia Dalia	37
174	Maisonette Baby	87
175	Tartarughiera Baby	94
176	Tartarughiera Elba	94
181	Nido Samsara completo estraibile Ø 10	46
182	Ciotola nido	48
183	Tartarughiera Maxi	92
184	Sifone Leo	21
185	Mangiatoia Hasselt	30
186	Porta	30
189	Trasportino Penelope	96
190	Mangiatoia Toledo	40
198	Tartarughiera Oasi maxi	92
199	Mangiatoia Piacenza	30
200	Trasportino con griglia fissa e mangiatoia esterna	05
201	Trasportino con griglia fissa e mangiatoia interna	06
202	Trasportino con griglia telescopica	07
203	Tino + n. 6 Secondino	10
204	Trasportino per ondulati a 5 posti	08
205	Trasportino per medie taglie a 5 posti	09
206	Beverino rettangolare	18
207	Coperchio con maniglia	05

## INDICE PER ARTICOLO

CODICE	DESCRIZIONE	PAG.
208	Ruote	19
209	Divisoria per Tino	19
210	Gancio	18
211	Griglia per art. 200	20
212	Griglia per art. 201	20
213	Griglia per art. 202	20
214	Mangiatoia rettangolare	18
215	Parete estraibile per Tino	19
216	Posatoio per art. 200-201-202	18
217	Coperchio per Maxi Tino	09
218	Tino vuoto	06
219	Salva-goccia per art. 129	27
220	Trasportino singolo per taglie fino 14 cm	10
221	Beverino Secondino	22
222	Sifone universale	23
223	Nido completo estraibile Ø 8	46
224	Ciotola nido	48
225	Valigia completa di 10 Secondini	12
226	Valigia vuota	12
227	Parete estraibile per Maxi Tino	19
228/A	Divisoria per Maxi Tino	19
228/C	Divisoria per Maxi Tino	19
229	Griglia per art. 204	20
230	Griglia per art. 205	20
232	Mangiatoia interna con ganci	31
233	Trasportino per trasporto collettivo retro chiuso	09
234	Maxi Tino + n. 10 Secondini	11
235	Tino Economy	04
236	Divisoria per Tino Economy	19
237	Supporti per secondino	19
238	Griglia per art. 235	20
239	Maxi Tino vuoto con supporti	11
240	Beverino Dino	22
242	Trasporto singolo per taglie fino 28 cm	17
244	Trasporto singolo per taglie fino 18 cm	13
245	Maxi Tino + n. 5 Secondini maxi	17
247	Gancio per coperchio valigia art. 225	18
248	Beverino Secondino maxi	18
249	Posatoio per art. 235	18
250	Interno completo x art. 200	05
251	Interno completo x art. 201	06
252	Interno completo x art. 202	07
253	Mangiatoia "Ara" piccola	29
254	Mangiatoia "Ara" media	29
255	Mangiatoia multipla	40

CODICE	DESCRIZIONE	PAG.
256	Valigia 6 posti per art. 244	13
257	Valigia 8 posti per art. 244	14
258	Valigia 12 posti per art. 244	14
259	Valigia 18 posti per art. 244	15
260	Carrello con 160 secondini medi	16
261	Valigia vuota 6 posti	13
262	Valigia vuota 8 posti	14
263	Valigia vuota 12 posti	14
264	Valigia vuota 18 posti	15
265	Kit luci per valigia 6 posti	13
266	Kit luci per valigia 8 posti	14
267	Kit luci per valigia 12 posti	14
268	Kit luci per valigia 18 posti	15
269	Kit luci per art. 260	16
270	Kit luci universale	15
271	Accendisigari con cavo di mt. 3	15
272	Posatoio plastica	85
273	Carrello con 60 secondini medi	16
273/A	Modulo superiore con 24 secondini	16
273/B	Modulo inferiore con 36 secondini	16
273/C	Comp. trasformazione ruote removibili	16
274	Sifone Aosta corto	21
275	Sifone Ferrara	23
276	Copertura x valigia 6 posti	13
277	Copertura x valigia 8 posti	14
278	Copertura x valigia 12 posti	14
279	Copertura x valigia 18 posti	15
280	Maisonette Candy	87
281	Tartarughiera Daffy	92
283	Toilette Felix con cornice	97
284	Sifone Aosta lungo	21
285	Sifone Livorno	23
286	Trasportino Calipso	96
288	Gabbia trasportino XL	81
290/8	Fondello nido in vimini Ø 8	51
290/9	Fondello nido in vimini Ø 9	51
290/10	Fondello nido in vimini Ø 10	51
290/11	Fondello nido in vimini Ø 11	51
290/12	Fondello nido in vimini Ø 12	51
290/15	Fondello nido in vimini Ø 15	51
291	Fondello nido in juta Ø 8/10/12	50
292	Fondello nido in juta-cotone Ø 8/10/12	50
293	Fondello nido in poliester Ø 10	50
294	Confezione di juta	52
295	Juta-cotone	52
296	Confezione di filo di cotone	52

## INDICE PER ARTICOLO

CODICE	DESCRIZIONE	PAG.
297	Cocco-Sisal-Juta-Cotone	52
298	Cocco-Sisal-Meliga-Brattea	52
299	Nido goccia in vimini	50
300	Fibra di cotone per roditori	90
301	Tubo diam. int. 4 per art. 129	27
302	Tubo diam. int. 8 per art. 219	27
303	Raccordo a "T" per tubo art. 301	27
304	Uova medio Parrocchetto	55
305	Uova grandi Parrocchetto	55
306/MIX	Anelli in plastica multicolore Ø 3 mm	54
306/MONO	Anelli in plastica monocoloro Ø 3 mm	54
307	Anelli "click" in plastica Ø 8/12/16	54
308	Anelli in alluminio Ø 2,5/3/4/6/8/10/12	54
309	Tronchese inox per anellini	54
310	Beverino Capri	28
311	Beverino Giglio	28
312	Tartarughiera Ischia	92
313	Mangiatoia Olanda c/ganci plastica	38
314	Mangiatoia Olanda c/ganci in ferro	38
315/B	Bandina Gabbia Espositore	78
315/C	Coperchio per gabbia esp. art. 315	78
315/F	Cassetto per gabbia esp. art. 315	78
315/G	Griglia per gabbia espos. art. 315	78
315/FB1	Gabbia espos. 1p. frontale bianco	75
315/FB3	Gabbia espos. 3p frontale bianco	76
315/FB3A	Gabbia espos. 3p frontale bianco	76
315/FN1	Gabbia espos. 1p.frontale nero	75
315/FN3V	Gabbia espos. verde 3p. frontale nero	76
315/FN3	Gabbia espos. 3p. frontale nero	77
315/FZ3	Gabbia espos. 3 p. frontale zincato	77
315/SC	Gabbia espos. 3p. sistema carta	77
315/SP	Gabbia espos. c/foro laterale	75
315/T	Telaio per gabbia esposizione art. 315	78
317/B	Gabbia cova plastificata	57
317/Z	Gabbia cova zincata	57
318	Bagno esterno con ganci in plastica	44
319	Griglia per gabbia cova 55	56
320	Antispreco per art. 313/314	38
321	Sifone Bari	29
321/B	Sifone Ancona	29
322	Porta sali Valencia	41
323	Mangiatoia eclissi	33
323/G	Gancio per attacco universale Mang.Eclissi	34
323/I	Supporti attacco interno gabbia Mang. Eclissi	34

CODICE	DESCRIZIONE	PAG.
324	Mangiatoia per svezzamento	38
325	Nido medio	47
326/B	Gabbia cova	58
326/Z	Gabbia cova zincata	58
326/SC	Gabbia cova	59
327	Laterale in plastica per gabbia cova 58	60
328	Cassetto per gabbia cova 58	60
330	Guida per divisorio	61
331	Divisorio chiuso per gabbia cova 58	61
332	Griglia per gabbia cova 58	61
333	Griglia incurvata per gabbia cova 58	61
334	Gancio ferma griglia	60
335	Mangiatoia Amsterdam	30
336	Coperchio per mangiatoia mezzaluna	32
337	Sistema voliera	60
338	Rubinetto per tubo art. 301	27
339	Serbatoio per impianto a goccia	27
340	Struttura per sistema carta 2X4	70
341	Struttura per sistema carta 4X4	70
342	Struttura per sistema cassetto 2X4	71
343	Struttura per sistema cassetto 4X4	71
344	Ruota per struttura singola art. 340/342	74
345	Struttura doppia per sistema carta 2X4	72
346	Struttura doppia per sistema carta 4X4	72
347	Struttura doppia per sistema cassetto 2X4	73
348	Struttura doppia per sistema cassetto 4X4	73
349	Rotolo di carta 12X33	74
350	Posatoio per gabbia da cova	61
351	Struttura per sistema carta 4X5	79
352	Struttura per sistema cassetto 4X5	80
353	Ruote per struttura singola	80
354	Rotolo di carta 10X18	79
355	Posatoio Sunset	85
356	Gancio per unione gabbia cm 58	60
357	Ciotola Minou Lt.0,2	98
358	Ciotola Bizet Lt. 0,3	98
359	Ciotola Matisse Lt. 0,5	98
360	Ciotola doppia Romeo Lt. 0,3x2	98
361	Sifone Revolution cc 72	26
362	Sifone Revolution cc 105	26
363	Sifone Revolution cc 140	26
364	Sifone Revolution cc 200	26
365	Sifone Revolution cc 260	26
366	Sifone Revolution cc 400	26
370	Maisonette Cleo	87
371	Tartarughiera Toby	93



## INDICE PER ARTICOLO

CODICE	DESCRIZIONE	PAG.
372	Tartarughiera Sammy	93
374	Nido Paradise	49
375	Parete retro per gabbia cova cm 58	59
376	Nido Interno in plastica Relax Ø 10	48
377	Gabbia cantori da esposizione	82
379	Scheda cova per nido 181/223	46
380	Sifone Amalfi	23
381	Nido in gommapiuma Ø 10	48
382	Fondello in gommapiuma Ø 12	48
383	Griglia per gabbie 20/21/288	81
384	Porta-scheda Twister	53
385	Schedina Twister	53
386	Sifone Venezia	21
387	Sifone Pisa	21
388	Portina in ferro con molla	84
389	Sifone Ghiotto con ventose cc 70	89
390	Sifone Bijou cc 90	89
391	Sifone Jingle con anello cc 200	89
392	Sifone Elliot con ventose cc 200	89
393	Sifone Elvis con anello cc 400	89
394	Portanido in ferro Ø 8	48
395	Anello per beverini cc 400	25
396	Cassetto gabbia cova 120	65
397	Laterale in plastica per gabbia cova 90 e 120	65
398	Kit voliera gabbia cova 90 e 120	67

CODICE	DESCRIZIONE	PAG.
399	Parete retro per gabbia 120	66
400	Gabbia cova 120 Cortina	63
401	Gabbia cova 120 Bormio	63
402	Gabbia cova 120 Sestriere	64
403	Gabbia cova 120 Livigno	64
404	Griglia bianca per gabbia cova 120	65
405	Griglia zincata per gabbia cova 120	65
407	Posatoio con perno per gabbia 90 e 120	67
408	Posatoio per gabbia 90 e 120	67
409	Maniglia universale	67
410	Porta mangiatoia interno	67
411	Divisorio in plastica per cova 90 e 120	66
413	Divisorio in ferro per cova 90 e 120	66
414	Cassetto gabbia cova 90	65
416	Parete retro per gabbia cova 90	66
417	Kit guide per gabbia cova 90	67
418	Carrello 120 per gabbie cova	68
419	Carrello 180 per gabbie cova	68
420	Gabbia cova 90 Positano	62
421	Gabbia cova 90 Portofino	62
423	Griglia bianca per gabbia cova 90	65
424	Carta bulinata per cova 58	61
425	Carta bulinata per cova 120	69
426	Carta bulinata per cova 90	69
428	Valigia 8 posti verde	82



**2 GR di Gobbi Luciano & C. snc**  
Via Verzelloni, 14 - 42015 Correggio (RE) - Italy  
Tel. +39.0522.694935 - Fax +39.0522.631513  
[www.2g-r.com](http://www.2g-r.com) - [info@2g-r.com](mailto:info@2g-r.com)



[www.2g-r.com](http://www.2g-r.com)

